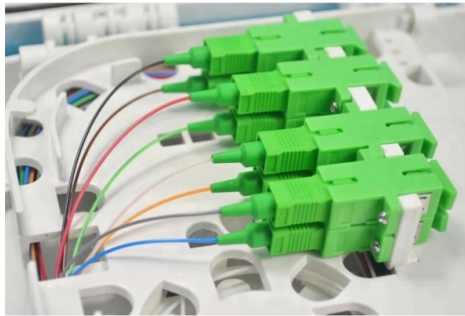


Standard power distribution box specifications for North Korean cold storage



Overview

Power Needs: Units require 460/480 VAC, 3-phase, 60 Hz power, with a maximum electrical load of 18.75 kVA under rated conditions and power consumption not exceeding 15 kW. In either case, the power source must. Power Distribution Equipment is a term generally used to describe any apparatus used for the generation, transmission, distribution, or control of electrical energy. This section concentrates upon commonly used power distribution equipment: Panelboards, Switchboards, Low-Voltage Motor Control. This document provides technical standards for multi-commodity cold storage facilities that require pre-cooling of fresh fruits and vegetables before storage. Contact Kingspan Technical Kingspan QuadCore™ Colds inspan MORS Coldstore SI tion that is found to be misleading. Suggestions for, or description of, the end use or application of products or methods of working are for information only and Kingspan Limited and. Xtralis has produced this Design Guide as a reference, to be consulted when designing and specifying VESDA fire protection solutions for freezers, cold storage areas and loading bays with temperatures ranging from -40°C (-40°F) to 18°C (65°F).

Article Content

Cold Chain

The cold chain is a set of rules and procedures that ensure the proper storage and distribution of vaccines to health services from the national to the local level. The

Technical Standard for Cold Storage | PDF

This document provides technical standards for multi-commodity cold storage facilities that require pre-cooling of fresh fruits and vegetables before storage. It

MNS® Low Voltage Distribution Board and Power Cabinet

The ABB-MNS® distribution board and power cabinet are of a welded structure. The product comes in a good variety of shapes, and is highly versatile, structurally innovative, and mechanically rigid. Its

Google Translate

Google's service, offered free of charge, instantly translates words, phrases, and web pages between English and over 100 other languages.

Technical Specifications for Distribution Boxes and Switch Boxes

This document sets forth technical, installation and safety specifications for distribution boxes, switch boxes and cabinets. It stipulates requirements for enclosure materials, installation dimensions, the

IEC Standard for Power Distribution Board Design and

Designing a power distribution board is not just about placing components inside a metal box. It requires a deep understanding of international

What is the Correct Operation Method of the Distribution

During the installation of a cold storage, the operation of the cold storage distribution box is of great importance. However, most people are not well

A Guide to Cold Storage Design

We appreciate you thinking of Johns Manville for your cold storage project. Please contact us at 1-800-922-5922 # 3 for additional information on cold storage and our details. Johns Manville is a

Distribution Box Specifications And Models

The above are only some common distribution box specifications and features. When making actual selections, it is necessary to comprehensively

WHO/PQS/E004/CB02.1 PQS performance specification Distribution:

This specification defines the requirements for thermally insulated cold boxes with a capacity of 100 litres or greater. These are typically used to maintain the cold chain when vaccines are transported in bulk

Experimental study on thermal storage characteristics of cold storage ...

A cold storage distribution box was tested to investigate the effects of the amount of phase change material (PCM), adjustment plate opening rate and the heat transfer area of the storage plate

REFRIGERATED STORAGE DESIGN GUIDE

In this Design Guide we will discuss the relevant design considerations and make recommendations regarding the most effective way in which to install a VESDA solution in the particular refrigerated

Requirements And Specifications For Installation Of

In flammable and explosive environments, explosion-proof distribution boxes should be selected and explosion-proof treatment should be carried out.

Kingspan Coldbox Specification Guide

Specification Guide Kingspan Coldbox is an easy to install self supporting coldstore solution which offers superior energy efficiency and increased storage volume compared to conventional cold rooms.

Power Distribution Equipment

Each has its own unique standards and application guidelines, and one facet of good power system design is the knowledge of when to apply each type of equipment and the limitations of each type of

REFRIGERATED CONTAINER SITE PREPARATION

Power Needs: Units require 460/480 VAC, 3-phase, 60 Hz power, with a maximum electrical load of 18.75 kVA under rated conditions and power consumption not exceeding 15 kW.

A Guide to Cold Storage Design

Cold storage buildings are commonly maintained at temperatures that are considerably lower than the exterior temperature. So, for cold storage buildings, exterior air is almost always warmer, and water

What is the Correct Operation Method of the Distribution

After the cold storage is installed, the power cables between the distribution box and the machine tool should preferably be placed in the middle of

Distribution Box – Astryd Power Pvt. Ltd.

This specification covers the design, manufacture, testing at works, and supply of Distribution Boxes made out of CRCA MS (cold-rolled close annealed mild steel). These distribution boxes are used for

MJ 16392_CII_TS for COLD ROOM_Feb 08''22 copy

Cold storages are run as independent industrial units & sizes range from 500 Ton storage capacity to 15000 ton or even more in multi - room / multi temperature / multi commodity configuration with

Walk-in Cold Rooms, a Practitioner''s Technical Guide

An important consideration of the guide is how to ensure effective cooling in situations of limited, unreli-able power supply and off-grid where no grid power is available at all, focusing on distributed

Contact Us

For more information, pricing, or custom solutions, please contact us:

Website: <https://sailingpoland.eu>

Email: info@sailingpoland.eu

Phone: +48 537 281 940

Address: ul. Puławska 12, 02-566 Warsaw, Poland

This document is for informational purposes only. Specifications subject to change without notice.

