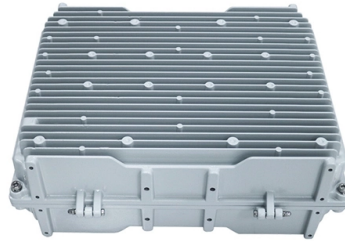


Should the installation of the distribution box be concealed



Overview

1)The distribution box shall be installed in a concealed way. When building the wall, the reserved hole shall be about 20mm larger than the length and width of the distribution box. It takes the incoming power and safely distributes it to different circuits throughout your building. The reserved depth is the thickness of the distribution box plus. The installation elements of panel electrical box include the following points: ****Determine the installation location****: Choose a dry, well-ventilated location to install the panel distribution box, away from flammable and explosive items, and make sure there are no obstructions around it. The length of the bolts is generally the sum of the embedded depth (75-150 mm), the thickness of the box bottom plate, the thickness of the nuts and washers, plus the "overhanging.

Article Content

Installation requirements for distribution boxes

Installation of closed or explosion-proof electrical facilities; distribution box electrical components, meters, switches and lines should be arranged neatly, firmly installed, easy to operate.

14 tips for the installation of distribution board | China electrical ...

When concealed, there should be no gaps around the distribution box, the edges of the panel should be close to the wall, and the box should be in contact with buildings and structures.

Installation elements of panel electrical box

The box should be installed firmly, horizontally and vertically, and the vertical deviation should not be greater than 3mm; when installed concealed,

How To Distribute The Distribution Box Reasonably?

The distribution box shall be installed firmly, horizontally and vertically, and the vertical deviation shall not be greater than 3 mm; in case of concealed

Understanding Distribution Boxes: A Comprehensive Guide

support safer operation in electrical systems For this reason, distribution boxes are widely used in homes, commercial buildings, industrial

Notes for Installation of Distribution Box

Whether installing metal or plastic distribution boxes, whether using open or concealed packaging, the box body of distribution boxes must ensure integrity, and no part can be missing.

Distribution Box Installation: A Complete Guide to Safe

In this comprehensive guide, we'll cover everything you need to know about distribution box installation, from the basics to the step-by-step installation

How to Install a Cable Distribution Box Safely and

Conduct a detailed survey of the installation site to determine the installation location of the cable distribution box. The installation location should

How to determine the size, installation method and

2) The distribution box shall be installed in a concealed way. The distribution box shall be embedded in the wall. When the wall is built, the reserved hole shall be

Requirements And Specifications For Installation Of

The distribution box should be installed in an area close to the power supply to reduce power loss and ensure safety. Avoid installing in a humid and

Installation Mode Of Distribution Box

1)The distribution box shall be installed in a concealed way. The distribution box shall be embedded in the wall. When building the wall, the

The Importance of Distribution Boxes in Electrical Systems

A distribution box is an exposed or concealed metal box that houses the circuit breakers that regulate the distribution of electricity throughout a

How to Install a Distribution Box—A Comprehensive

The ideal location to install electrical distribution boxes should keep a distance from water, flammable and explosive substances and corrosive

The Definitive Guide of Concealed Conduit Wiring 2024

When it comes to electrical installations, concealed conduit wiring should be a good choice for safety and aesthetics factors. Concealed conduit

Cautions and Requirements for Installation of

8. After installation, the residue in the distribution box should be cleaned up. When the distribution box is installed and constructed, some safety operation items

Embedded Installation Of Distribution Box

According to the installation size of wall mounted (surface mounted) terminal combination electrical appliances, first drill bolt holes or embedded wood bricks, then open the upper cover of the

The Complete Guide to Distribution Box: Installation, Types & More

High-usage commercial and industrial installations may require more frequent inspections based on operating conditions and manufacturer recommendations. Can I add circuits to an existing

Safety requirements of distribution box

The distribution box has the characteristics of small size, simple installation, special technical performance, fixed location, unique configuration function, not limited by

Distribution box

In this article, you will learn everything you need to know about installing, expanding or replacing a distribution box - from the legal basis to practical implementation.

How to Install a Distribution Box—A Comprehensive

Whether you are an electrical contractor or a construction brigade, knowing how to properly and safely install distribution boxes is the basis of

Distribution Box Installation: A Complete Guide to Safe

The distribution box, often referred to as a breaker box, fuse box, or electrical panel, is a critical component of any electrical system. It acts as the central hub for

Cautions and Requirements for Installation of

Distribution box is a low-voltage distribution device which assembles switchgear, measuring instruments, protective appliances and auxiliary equipment in a closed

Understanding Distribution Boxes: A Comprehensive Guide

Concealed Installation: This is where the distribution box is installed inside the wall, thereby making it less visible. Although it enhances aesthetics, it

How to Install Concealed Conduit Electrical Wiring

Step-3: Installation of Switch Board Back Boxes All concealed switch board shall be fixed properly in level as per given schedule (Height, distance from Finished Floor

Requirements And Specifications For Installation Of

In flammable and explosive environments, explosion-proof distribution boxes should be selected and explosion-proof treatment should be carried out.

Contact Us

For more information, pricing, or custom solutions, please contact us:

Website: <https://sailingpoland.eu>

Email: info@sailingpoland.eu

Phone: +48 537 281 940

Address: ul. Puławska 12, 02-566 Warsaw, Poland

This document is for informational purposes only. Specifications subject to change without notice.

