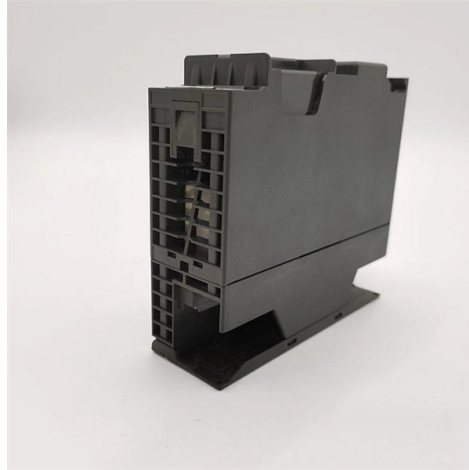


Room FC Interface



Overview

Fibre Channel is standardized in the T11 Technical Committee of the International Committee for Information Technology Standards (INCITS), an American National Standards Institute (ANSI)-accredited standards committee. Fibre Channel started in 1988, with ANSI standard approval in 1994, to merge the benefits of multiple physical layer implementations including SCSI, HIPPI and. Overview Fibre Channel (FC) is a high-speed data transfer protocol providing in-order, lossless delivery of raw block data. Fibre Channel is primarily used to connect to in (SAN) in co. When the technology was originally devised, it ran over optical fiber cables only and, as such, was called "Fiber Channel". Later, the ability to run over copper cabling was added to the specification. In order to avoid confu.

Article Content

Understanding Interfaces on an FCoE-FC Gateway | Junos OS

Each native FC interface can belong to only one local FC fabric configured on the gateway. You can configure up to 12 FC fabrics on a gateway, but each FC fabric must use different native FC

Fibre Channel over Ethernet (FCoE) Configuration Overview on Red

Fibre Channel over Ethernet (FCoE) Based on standards from IEEE T11 FC-BB-5, FCoE allows the encapsulation of Fibre Channel (FC) frames over Ethernet networks. The common data center has a

Cisco Room Series User guide

There is also new functionality available. This guide introduces some of the new features and changes to existing ones that you'll find on the RoomOS 11 user interface on Touch controllers connected to

Assigning Interfaces to a Fibre Channel Fabric | Junos OS | Juniper ...

You must configure the FC interfaces and the FCoE VLAN interfaces that you assign to a particular fabric on the same Juniper Networks QFX3500 Switch. Traffic between an FCoE device and the FC

Configuring FC interfaces

An FC interface connects to a node (server or disk) or FC switch for transmitting and receiving FC frames. To connect to an FC interface of a peer device, you must use an FC interface.

Fibre Channel Routing Concepts

Fibre Channel route (FC Router) A switch running the FC-FC routing service. Refer to Supported Platforms for FC-FC Routing for the list of platforms that can be FC routers. Backbone fabric A

netapp_ontap.resources.fc_interface API documentation

An FC interface provides FC access to storage within the interface SVM using either Fibre Channel Protocol or NVMe over FC (NVMe/FC). The Fibre Channel interface REST API allows you to create,

How to Access and Control Microsoft Teams Rooms

The day has come for me to write this blog post! My colleagues asked me for showing them how to Control MTRoW remotely, In addition, I took part of Get-CS

Crestron Flex Advanced Small Room Conference

Enterprise-grade security - connects and communicates securely over any enterprise or SMB network Supports single or dual video displays (not included) The UC

Microsoft Teams Rooms system guide: how to choose

A practical guide to Microsoft Teams Rooms systems. Learn about system types, key components, and how to choose the best setup for your

Cisco MDS 9000 Series Interfaces Configuration Guide, Release 9.x

This option is supported only on Fibre Channel (FC) interfaces configured in F-mode. It can be configured regardless of interface speed but will only be applied during link negotiation at 32

Fibre Channel Routing Concepts

A simple metaSAN can be constructed using an FC router to connect two or more separate fabrics. Additional FC routers can be used to increase the available bandwidth between fabrics and to

Using camera modes and boundary framing in Zoom

Zoom Rooms offer multiple camera modes to help facilitate the best meeting experience. This article includes details on enablement and impact for each mode.

Fibre Channel

The INCITS/Fibre Channel Technical Committee is responsible for the development of the Fibre Channel (FC) standards. These standards specify the following: Other technical work deemed

Fibre Channel Interfaces

Fibre Channel can be implemented in the form of a continuous arbitrated loop (FCAL) that can have hundreds of separate storage devices and host systems attached, with connection via a high-speed

Integrating Microsoft Teams Rooms into Q-SYS

The Q-SYS Core can also present a Room Control interface on the Logitech Tap. So in addition to all the expected Teams Room controls,

Microsoft Teams Rooms on Windows version 4.16 new

What's changing? The user interface is getting a complete overhaul. Below are the touch controllers from the old and new UI for comparison You will

What does good control room design look like?

In our experience, having been in many 24/7 mission-critical control rooms in continuous process industries, finding examples of "good control room design" isn't easy. Think about your own

Understanding Interfaces on an FCoE-FC Gateway | Junos OS

One or two blocks of six proxy N_Port (NP_Port) interfaces to connect to FC switch fabric ports (F_Ports). Each FC fabric is local to the gateway on which you configure it.

How to set up a gaming PC for your living room | PCWorld

Using a PC for living room gaming? These are the apps and settings tweaks that will optimize your experience.

Storage Networking 101: Understanding Fibre Channel

They are: FC-0: The interface to the physical media; cables, etc FC-1: Transmission protocol or data-link layer, encodes and decodes signals FC-2: Network Layer; the core of FC FC-3: Common services,

iSCSI vs. FC vs. FCoE | Pure Storage

iSCSI, FC, and FCoE are all forms of networked storage. Let's look at each protocol and the advantages and disadvantages of each.

Fibre Channel Protocol

- Fibre Channel's FC-0 level describes/specifies the physical interface characteristics, including transmission media, transmitters and receivers, and their interfaces. The FC-0 level

How should I set up my Fibre Channel (FC) network?

In fact, the Fibre Channel protocol is a direct extension of the SCSI protocol. All SCSI commands have a FC equivalent, and FC has a few extra ones that allow for networking. Assuming you have all the

Configuring Fibre Channel Interfaces

Fibre Channel over Ethernet (FCoE) encapsulation allows a physical Ethernet cable to simultaneously carry Fibre Channel and Ethernet traffic. In Cisco Nexus 5000 Series switches, an

Contact Us

For more information, pricing, or custom solutions, please contact us:

Website: <https://sailingpoland.eu>

Email: info@sailingpoland.eu

Phone: +48 537 281 940

Address: ul. Puławska 12, 02-566 Warsaw, Poland

This document is for informational purposes only. Specifications subject to change without notice.

