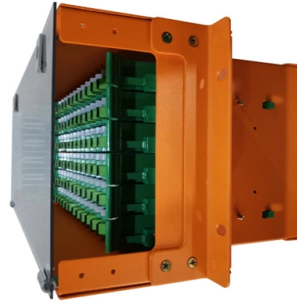


## Low-voltage transformer primary distribution box



### Overview

Closer to the customer, a distribution transformer steps the primary distribution power down to a low-voltage secondary circuit, usually 120/240 V in the US for residential customers. The power comes to the customer via a service drop and an electricity meter. Overview Electric power distribution is the final stage in the. Electricity is carried from the to individual consumers. Distribution connect to the transmission system an. Electric power distribution become necessary only in the 1880s, when electricity started being generated at. Until then, electricity was usually generated where it was used. The first power-distri. Electric power begins at a generating station, where the potential difference can be as high as 33,000 volts. AC is usually used. Users of large amounts of DC power such as some.



## Article Content

What is a Low Voltage Panel (Switchgear) Aktif Elektroteknik

Learn what a low voltage panel is, explore its key components, safety standards, classifications, and discover the

China 500 KVA Distribution Transformer-11/0.415 KV | Australia 2025 ...

01 General 1.1 Project Description 500 kVA oil-immersed distribution transformer was delivered to Australia in 2025. The rated power of the transformer is 500 kVA with KNAN cooling. The high

Power Transformers: Definition, Types, and Applications

Key learnings: Power Transformer Definition: A power transformer is a static device that efficiently transfers electrical energy between circuits without

Low-voltage main distributor for compact secondary substation

Pre-configured solution for the main low voltage distribution board (LVDB) of compact transformer stations with 1,250 A @ 400 V. An ideal starting point for fast and simple adaptation to your specific

Medium voltage products Technical guide The MV/LV transformer ...

It can be defined as a transforming, conversion, transmission or distribution substation. A MV/ LV transformer electrical substation consists, therefore, of the set of devices dedicated to the

Catalog Extract from LV 10 · 04/2020

This comprehensive portfolio for low-voltage power distribution and electrical installation technology covers every requirement - from the switchboard to the socket outlet.

How to Test a Transformer: 12 Steps (with Pictures)

The voltage being supplied to the primary should be labeled both on the transformer and the schematic. The voltage being generated by the secondary should be labeled in the same fashion as the primary.

Electric power transmission

In the power industry, electric power transmission is distinct from the local wiring between high-voltage substations and customers, which is typically referred to as

Low Voltage Distribution Transformers, Single Phase

Browse our products and documents for Low Voltage Distribution Transformers, Single Phase - DOE 2016 Efficiency Single Phase (EE)

DCF Power Distribution LVDC white paper version 1.0.docx

While many sub classifications of voltage exist, there are two primary classifications commonly recognized by codes and standards – low voltage and high voltage.

Catalog Extract from LV 10 · 04/2020

Which is why products and systems featuring maximum safety and optimum efficiency are in demand. This comprehensive portfolio for low-voltage power distribution and electrical installation technology

A Complete Guide to LV Distribution Board | CHINT global

LV distribution boards, part of the electrical distribution system, securely distribute low-voltage power to facility circuits. Integrated with ACBs and

The Meaning and Function of Primary, Secondary, and Tertiary ...

From the transformer's low-voltage side (0.4kV), power is distributed to a main distribution panel (primary distribution box).

Distribution Automation Handbook

3.14 Primary Distribution Substations A primary distribution substation is the connection point of a distribution system to a trans-mission or a sub-transmission network. Outgoing feeders from a

Primary and secondary power distribution systems

The low-voltage network is supplied from two or more distribution transformers at a single site, each fed from a different MV feeder (which may

A Complete Guide to LV Distribution Board

LV distribution boards, part of the electrical distribution system, securely distribute low-voltage power to facility circuits.

Mini power center design guide

Eaton standard low-voltage dry-type distribution transformers are designed for 60 Hz operation. Transformers required for other frequencies are available and must be specifically designed.

Low-voltage distribution networks

In cities and large towns, standardized LV distribution cables form a network through link boxes. Some links are removed, so that each (fused) distributor leaving a substation forms a

Medium voltage products Technical guide The MV/LV transformer ...

The indicative values of power that can be connected on the different voltage levels of the distribution networks are specified by the standard in the following table.

## The Meaning and Function of Primary, Secondary, and Tertiary ...

The terms primary, secondary, and tertiary distribution boxes are relative. Let's make an example for clarity: A newly constructed residential area introduces a 10kV power line to a substation. From the

## Distribution Transformers: Principles Types, and more

Learn about the different types, parts, and working principles of distribution transformers used for lower voltage distribution networks.

ABB Group | Helping industries outrun - leaner and cleaner | ABB

Global technology leader in electrification and automation. ABB helps industries run at high performance, while becoming more efficient, productive and sustainable.

## Power Distribution Equipment

The following low-voltage dry-type transformers must comply with the DOE efficiency standards as shown in Energy Conservation Standards for Low Voltage Dry-type Distribution Transformers:

The difference between the first,second,and third levels of ...

In addition to installing leakage protectors in the final switch box, a first level leakage protector should also be installed in the upper level distribution box or main distribution box, forming

## Medium-voltage transformers: fundamentals of medium

A medium-voltage distribution transformer or service transformer is a transformer type that provides the final voltage transformation in the electric power distribution

## Contact Us

For more information, pricing, or custom solutions, please contact us:

Website: <https://sailingpoland.eu>

Email: [info@sailingpoland.eu](mailto:info@sailingpoland.eu)

Phone: +48 537 281 940

Address: ul. Puławska 12, 02-566 Warsaw, Poland

This document is for informational purposes only. Specifications subject to change without notice.

