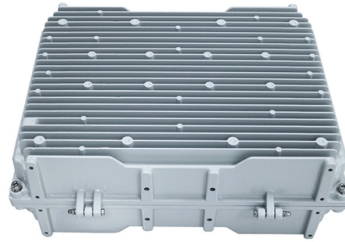


Live parts of the distribution box



Overview

A distribution box has several important parts. Each part does something special:

Main Switch: This switch controls all electricity coming into the box.

Busbar: A metal strip spreads power to each circuit.

A distribution board (also known as panelboard, circuit breaker panel, breaker panel, circuit breaker, electric panel, fuse box or DB box) is a component of an electricity supply system that divides an electrical power feed into subsidiary circuits while providing a protective fuse or circuit. A distribution box is a key part of electrical systems in buildings. Inside, you'll find parts like circuit breakers and fuses that protect the system from problems like overloads and short circuits. It ensures that electricity flows. A distribution box uses MCBs, RCDs, and busbars to protect circuits, prevent shocks, and ensure safe power distribution in homes and buildings.

Article Content

How Does a Power Distribution Box Work

But how does a power distribution box work exactly? In this article, we'll walk you through the step-by-step process of how power flows through a distribution box,

What is an Electrical Distribution Box? A

Discover everything you need to know about electrical distribution box! Learn about types, components, and how to choose.

Distribution boards components

Distribution boards (generally only one in residential premises) usually include the meter (s) and in some cases (notably where the supply utilities impose a TT earthing system and/or tariff

Understanding Distribution Boxes: Your Guide to Power

Weatherproof Distribution Boxes These serve specific outdoor purposes, with rain, dust, and extreme temperatures sealed shut, protecting any

The Crucial Components of a Distribution Board

The Crucial Components of a Distribution Board Distribution boards are integral parts of every household. It is responsible for maintaining a steady flow of electricity

Ultimate Guide To Distribution Boxes Db Boxes Types

This ultimate guide explains what a distribution box does, its internal components, common types, real-world applications, and how to select the right DB Box for

The Crucial Components of a Distribution Board

To operate at optimal levels, a distribution board must be equipped with several components, including bus bars, automatic protective equipment, bypass

Power Distribution Boxes Explained Simply

Learn what a power distribution box is, how it works, key components, types, and why it's vital for safe and efficient electrical systems.

The Anatomy of a Distribution Box: Key Components

A distribution box uses MCBs, RCDs, and busbars to protect circuits, prevent shocks, and ensure safe power distribution in homes and buildings.

Power Distribution Boxes Explained Simply

Discover the essentials of a Power Distribution Box—how it works, key types, benefits, and tips to ensure safe, efficient electrical power management.

Distribution Boxes Explained: Types, Functions, and

Learn about distribution boxes, their types, functions, and safety features to ensure efficient and secure electrical power distribution in any building.

A Definitive Guide To Distribution Boxes

The distribution box acts as the center of power distribution, distributing electricity to all connected devices. A distribution box, also known as a distribution board, panel board, breaker

About the Internal Structure and Basic Components of the Distribution

Distribution box is an important component in building electrical installation, which is directly related to voltage distribution, electrical control and power supply.

The Anatomy of a Distribution Box: Key Components

SHARE TO The Anatomy of a Distribution Box: Key Components Explained (MCB, RCD, Busbars) A distribution box uses MCBs, RCDs, and

Understanding Distribution Boxes: A Comprehensive Guide

A distribution box is an essential part of modern electrical systems because it helps distribute power safely, protect circuits, and improve system

The Complete Guide to Distribution Box: Installation, Types & More

Blog The Complete Guide to Distribution Box: Installation, Types & More By Admin Aug 2, 2025 No Comments # distribution box Introduction Electrical systems power our homes, offices, and

Distribution Box Guide: Types, Components & Solutions

Understand distribution boxes (DB boxes) in 5 minutes. Learn about types, components, functions, and uses. Find the perfect DB box for your needs.

What is the Function of a Distribution Box in Electrical Systems

Understand the function of the distribution box in electrical systems and how it ensures safe and efficient power distribution.

What is the Internal Structure of The Distribution Box

Learn about the internal structure of a distribution box, its components, functions, and key types. Understand its role in electrical systems and safety.

Single Phase Distribution Box Definition and Main Parts

A single phase distribution box controls and protects home or office circuits. Learn its definition, main parts, and how it ensures electrical safety.

Distribution Box: Key Functions, Components, and

Learn everything about the Distribution Box, its key components, and how to choose the right one. Explore our quality products and upgrade your

Distribution Boards

In this comprehensive guide, we will explore the crucial parts of a distribution board and gain insights into the components that make these systems function seamlessly.

Contact Us

For more information, pricing, or custom solutions, please contact us:

Website: <https://sailingpoland.eu>

Email: info@sailingpoland.eu

Phone: +48 537 281 940

Address: ul. Puławska 12, 02-566 Warsaw, Poland

This document is for informational purposes only. Specifications subject to change without notice.

