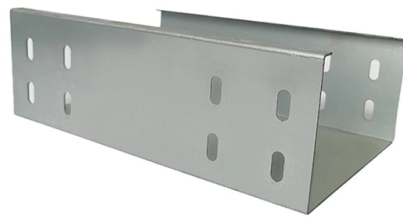


# Lightning Protection Standards for Outdoor Distribution Boxes



## Overview

BS EN 62305 is the British standard that governs the design, installation, maintenance, and testing of lightning protection systems. The motto in the picture – BLITZSCHUTZ GIBT SICHERHEIT (“LIGHTNING PROTECTION PROVIDES SAFETY”) – is as relevant today as it ever was, with external lightning protection still providing valuable passive fire protection in the event of a direct lightning strike. Addresses surge protection devices (SPDs), bonding, shielding, and routing to protect internal electrical and. nVent Engineered Electrical & Fastening Solutions is a leading global manufacturer and marketer of superior engineered products for niche electrical, mechanical and concrete applications. What is an Outdoor Electrical. Furse is the market leading lightning protection brand from Thomas & Betts, providing solutions worldwide for structural lightning protection, power earthing and electronic systems protection. At Thomas & Betts, our focus is on improving your business performance by providing practical, reliable. This manual is provided for the use of all Departments of the ITER Organization and is addressed to system specifiers, designers and users of electrical components in otherwise non-electrical plant systems. This is an initial version of this document that has been reviewed in accordance with the.

## Article Content

ITER Electrical Design Handbook Earthing and Lightning Protection

Earthing and Lightning Protection This work is licensed under the Creative Commons Attribution-Noncommercial-NoDerivs 3.0 IGO-ported license. (CC BY-NC-ND 3.0 IGO) You are free to share

Lightning protection and grounding requirements for outdoor energy ...

NFPA 780-2020, Standard For Lightning Protection Systems To safeguard people and property from lightning- related hazards, NFPA 780-2020 standardizes the installation of lightning protection

What is a waterproof outdoor distribution box

A waterproof outdoor distribution box shields electrical connections from water, dust, and weather, ensuring safe and reliable outdoor power distribution.

Understanding Outdoor Power Distribution Box: A

Explore the features and benefits of SX outdoor power distribution box, designed for durability, safety, and reliable power in any environment.

IEEE Std 1410 -2004, IEEE Guide for Improving the Lightning

American National Standards Institute Abstract: Measures for improving the lightning protection performance of schemes applied to overhead power distribution lines are discussed in this guide.

Understanding BS EN 62305: Lightning Protection

BS EN 62305 addresses not only the components and installation requirements for lightning protection systems but also how to evaluate the risk posed by lightning.

Lightning Protection Overview

General Industry Information The Lightning Protection Institute is a nationwide not-for-profit organization founded in 1955 to promote lightning

Lightning Safety When Working Outdoors

Lightning strikes can severely injure or kill workers whose jobs involve working outdoors. Lightning is often overlooked as an occupational hazard, but employers need awareness about lightning hazards

Description of the difference in IP waterproof ratings for

Waterproof distribution boxes are widely used in various harsh environments, such as outdoors, power facilities, and industrial sites. In order to

Lightning protection guide

Just like its predecessors, this edition of the lightning protection guide offers assistance in installing professional lightning protection systems in line with the very latest standards.

#### Standard for the Installation of Lightning Protection Systems

The provisions of this standard reflect a consensus of what is necessary to provide an acceptable degree of protection from the hazards addressed in this standard at the time the standard was issued.

#### ITER Electrical Design Handbook Earthing and Lightning Protection

This standard specifies standard current ratings for electrical devices, apparatus, instruments and equipment and should be applied to the designing or utilisation of systems or equipment as well as to

#### Technical Specifications for Outdoor LT Distribution boxes with ...

Scope: The scope of this specification covers Weather / Vermin proof LT distribution boxes (LTD) with controllers, MCCB, MCB, Bus bars, Contactors, CT's, Energy Meter, LT gas filled fixed capacitor, DC

#### TECHNICAL HANDBOOK

The specification of a lightning protection system should require that the design complies with the IEC 62305 series of design standards and that materials comply with the EN 50164 series of component

#### IEEE Guide for Direct Lightning Stroke Shielding of Substations

sign direct lightning stroke shielding for outdoor substations. Calculation details, design estimates, and generally accepted practices for substation shielding designs are provided. This guide can be

#### Outdoor Power Distribution Boxes: The Backbone of

Discover how J& HW Group's outdoor power distribution boxes deliver safe, weatherproof, and customizable solutions for modern industrial and

#### Lightning Protection Guide

A lightning protection system comprising external lightning protection (air-termination system, down-conductor system and earth-termination system) and internal lightning protection (lightning

#### Lightning Protection Strategies for Outdoor ACDB Panels: Essential ...

Effective lightning protection for outdoor ACDB panels requires a multi-layered approach combining primary protection systems, surge protection devices, proper enclosure design, and installation best

#### Lightning Protection Application Guide | UL Solutions

The need for certified lightning protection is increasing, and this guide looks at the requirements that support a safer, code-compliant installation.

Recommendation ITU-T K.158 (07/2025)

This Recommendation provides guidance on protecting indoor distribution systems for mobile communication in large-scale buildings from lightning and safety risks.

Outdoor Electrical Junction Box: Types & NEC Code Requirements 2025

Learn what an outdoor electrical junction box is, NEC 314 requirements, types like pull boxes and splice boxes, proper sizing

Lightning Protection Measures for Substations and

Learn about essential lightning protection measures for substations and transformers, including the use of lightning rods, surge arresters, and

Outdoor Electrical Box with Breakers: Circuit Protection & Load ...

Best For: Standard outdoor AC distribution, generator connection panels, pool/spa equipment, outdoor lighting circuits. DC-Rated Breaker Boxes (UL 489 DC or IEC 60947-2 DC)

WAC 296-46B Electrical Safety Standards, Administration, and ...

WAC 296-46B Electrical Safety Standards, Administration, and Installation State of Washington L& I Electrical Program

IEC 62305 Lightning Protection — Complete Guide

Complete IEC 62305 lightning protection guide covering risk assessment (Part 2), LPS classes I-IV, rolling sphere method, down conductors, air termination, and SPD selection. Free

The installation requirements for the distribution box

Learn how to install a distribution box safely and correctly. Covers wiring, placement, standards, and expert tips for a compliant setup.

A Guide to BS EN 62305 Protection Against Lightning

A Guide to BS EN 62305 Protection Against Lightning 3rd edition Guide to BS 62305 3rd edition Cover 08/01/2014 09:49 Page 2 Furse is the market leading lightning protection brand from Thomas &

Microsoft Word

He has been involved with power quality and distributed generation projects for the past 17 years including power conditioning device testing/application, surge/lightning protection, and

Design requirements and standards for low voltage

You must make safety your top priority when working with low voltage distribution boxes. Design requirements help you follow important standards like

## Contact Us

For more information, pricing, or custom solutions, please contact us:

Website: <https://sailingpoland.eu>

Email: [info@sailingpoland.eu](mailto:info@sailingpoland.eu)

Phone: +48 537 281 940

Address: ul. Puławska 12, 02-566 Warsaw, Poland

This document is for informational purposes only. Specifications subject to change without notice.

