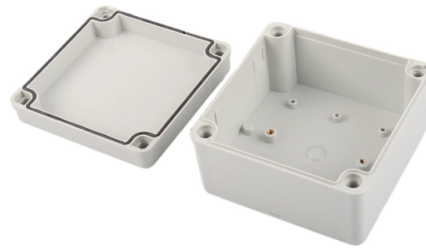


Instructions for Controlling Household Circuit Breaker Distribution Boxes



Overview

Check for proper IP/NEMA ratings and material quality. Ensure safe placement: install in dry, accessible areas with good ventilation and at appropriate height (typically ~1. Practice good wiring: secure grounding, neat cable management, proper insulation, and correct wire gauge. What is a Breaker Box and Why Do You Need a Wiring Diagram?

A breaker box, also known as an electrical panel or distribution board, is a crucial component of the electrical system in a building. It is responsible for distributing electricity from the main power source to various circuits throughout. This page contains wiring diagrams for a service panel breaker box and circuit breakers including: 15amp, 20amp, 30amp, and 50amp as well as a GFCI breaker and an isolated ground circuit. #dbbox #distribution #home #house. more In. This guide will help homeowners better understand breaker boxes, their components, and the process of wiring them while emphasizing safety and when to call in a pro. Whether you're considering a simple fix or thinking about a full panel upgrade, read on to learn everything you need to know What is.

Article Content

A Step-by-Step Guide to Wiring an Electrical Panel Box

Find out how to properly wire an electrical panel box with a comprehensive diagram and step-by-step instructions.

Home Wiring Guide

The consumer unit or commonly known as fuse box is the heart of a home wiring installation. It is usually mounted near the energy meter. A modern consumer unit

Circuit Breaker Box Basics For Every Home Owner

The circuit breaker box also houses other smaller sub-switches that connect with specific areas of your home. These small switches are

Circuit Breaker Wiring Diagrams

Clear, easy-to-read wiring diagrams and instructions for household circuit breakers including: a breaker panel box, 15amp, 20amp, 30amp, 50amp, and gfcı breakers.

Wiring a Breaker Box

A breaker box, also called an electrical panel, is a crucial piece of hardware found in every home. It serves two primary purposes: Electricity

Breaker Box Diagram and Wiring Guide

A detailed diagram of a breaker box, showing its components and how they function to protect electrical systems from overloads and faults.

Circuit Breaker Distribution Panel

Premium Electric electricians on how your circuit breaker distribution panel works, an easy-to follow guide for beginners.

A step-by-step guide to wiring your breaker box

Learn how to read and understand wiring diagrams for breaker boxes to ensure proper electrical configurations and safety measures.

A Beginner's Guide to Your Home's Electrical Breaker Box

This beginner's guide is an empowering tool for homeowners, ensuring you're equipped with the knowledge to manage your electrical breaker box safely

How to Wire a Single Phase Breaker Box: Step-by-Step

Learn how to wire a single phase breaker box with a wiring diagram. Understand the different components and connections involved in setting up a safe and efficient

The Breaker Box: An In-Depth Look at Circuit Breaker

Explore the essential guide to breaker boxes – from installation to upgrades. Learn about costs, wiring, and the difference between breaker boxes

House Distribution Board » Wiring Diagram

The individual circuit-breakers, which are connected to the main breaker box. The wires connecting the circuit-breakers to the outlets and

The Complete Guide to Distribution Box: Installation, Types & More

A distribution box, also known as a distribution board, electrical panel, or breaker box, is an enclosure that houses electrical components responsible for distributing electricity throughout a

Wiring a Breaker Box

Wiring a breaker box is a highly technical skill—knowing how it operates isn't. Take some of the mystery out of those wires and switches that lurk

Distribution Box Installation: A Complete Guide to Safe

A distribution box is an enclosure that houses multiple circuit breakers or fuses. It serves as a control center for managing the electrical supply to different areas or

Understanding Your Home's Electrical Breaker Box

A home breaker box, also known as an electrical panel or service panel, is a crucial component of your home's electrical system. It is where the main electrical supply

Understanding Your House's Electrical Panel: A Visual

Understanding the electrical panel in your house is essential for homeowners to ensure the safety and functionality of their electrical systems. The electrical panel,

How to Wire a Home Distribution Box

In this video, we'll walk you through the process of wiring a home distribution box with a detailed connection diagram. Whether you're an electrician

Distribution Box Installation: A Complete Guide to Safe

The distribution box, often referred to as a breaker box, fuse box, or electrical panel, is a critical component of any electrical system. It acts as the central hub for

Single Phase Distribution Box Definition and Main Parts

You can trust a single phase distribution box to help your circuits work well and stay safe every day. Key Takeaways A single phase distribution box helps control and share electricity in your home or

The installation requirements for the distribution box

Learn how to install a distribution box safely and correctly. Covers wiring, placement, standards, and expert tips for a compliant setup.

Full Guide to Panel Box

An electrical panel, also known as a breaker box, is the central hub of a home's electrical system, controlling the distribution of power and providing

Wiring a Breaker Box

This guide will help homeowners better understand breaker boxes, their components, and the process of wiring them while emphasizing safety and

What is an Electrical Distribution Box? A

It's recommended to check it annually or whenever you experience issues like frequent tripping. 3. What type of distribution box is best for a small

Distribution Boxes Explained: Types, Functions, and

Beyond simple power distribution, these units provide essential safety measures that protect against electrical hazards like short circuits and power

The Importance of Distribution Boxes in Electrical Systems

A distribution box is an exposed or concealed metal box that houses the circuit breakers that regulate the distribution of electricity throughout a

11 Steps For Electrical Circuit Breaker Panel Wiring

Learn how to safely and efficiently wire an electrical circuit breaker panel with this comprehensive 11-step guide. Cover essential tools, safety precautions, and step-by-step instructions to ensure proper

Contact Us

For more information, pricing, or custom solutions, please contact us:

Website: <https://sailingpoland.eu>

Email: info@sailingpoland.eu

Phone: +48 537 281 940

Address: ul. Puławska 12, 02-566 Warsaw, Poland

This document is for informational purposes only. Specifications subject to change without notice.

