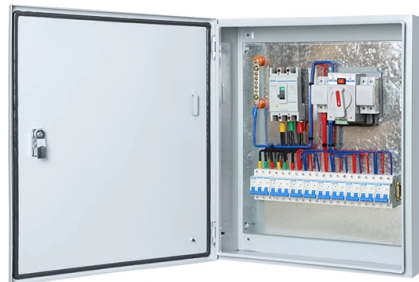


## Installation of seismic bracing for 2-layer cable trays



### Overview

Connect cables directly to 3/8" threaded rod in trapeze installations for seismic bracing. Predrilled tabs allow attachment directly to concrete deck. Spacing must be at least every 30'. This article will explore the importance of seismic resistance in cable trays, discuss when seismic braces are necessary, and help you understand how to make informed decisions for your installation. Before diving deeper into the specifics, it's important to understand the various factors that. An innovative bracing system was designed to provide lateral bracing for the cable tray system. Recommendations are made for improvements in the design procedures for seismic bracing of. Technical overview of seismic cable tray design considerations including bracing splice reinforcement movement accommodation cable retention and support verification.

## Article Content

Rev 7 to Procedure SAG.CP3, "Seismic Design Criteria for Cable Tray ...

The design requirements for seismic Category I structure are delineated in Regulatory Guide 1.29. This document provides the seismic design guideline for cable tray hangers of Comanche Peak Steam

### SEISMIC BRACING OF A DISTRIBUTED CABLE TRAY SYSTEM

The cable trays have diagonal bracing between layers of cable trays in the longitudinal direction using proprietary steel members and connected using bolts and clamps.

Seismic and cable tray solution flyer

Eaton's B-Line series cable tray with TOLCO seismic bracing is the recommended total solution for your project. Our cable tray, bolted framing, and seismic bracing are approved as one system through

Seismic and cable tray solution flyer

Our team of experts can help you select the best cable tray series for your application, as well as designing your seismic bracing layout to ensure it meets applicable building codes and standards.

Seismic Bracing Solutions for Data Center

From design to construction to inspection, we keep our process transparent to ensure a full understanding of the final bracing installation, whether it requires cable or rigid bracing solutions.

Seismic Bracing Systems for Cable Trays Catalog

Explore seismic bracing solutions for cable trays. Catalog details wire rope/cable systems, specs, design for earthquake protection.

Seismic Supports

Seismic Supports Cable trays are systems used for the safe transportation and protection of electrical cables, designed to fit the pathways within buildings and

Seismic Bracing Ensures Stability and Safety of Cable

Seismic bracing can enhance the stability and safety of cable trays during earthquakes and other vibration events, ensuring your cable system is secure

The shake on seismic bracing

Seismic bracing against the wrath of earthquakes is an increasing concern for today's data-communications and telecommunications cable installer, and efforts

## Seismic Bracing Kit | Seismic Bracing | Wire and Cable Hangers | Wire ...

Features Kit contains items needed for seismic bracing long cable tray runs. Each kit contains: (4) 11" cables with mounting eyelets (2) Metal brackets for attachment to support members (4) Cable clamp

## Appendix 3F Cable Trays and Cable Tray Supports

This appendix provides the design criteria for seismic Category I cable trays and their supports. Seismic Category II cable trays and their supports are also designed utilizing the design criteria of this appendix.

## Seismic Cable Restraint Kits

Overview The Easy ex EF5CK Series Seismic Cable Restraint Kits are engineered to secure suspended non-structural components—such as ductwork, piping, conduit, cable trays, and HVAC

## Understanding Seismic Support for Electrical Installations

Understanding Seismic Support for Electrical Installations In the realm of electrical installations, ensuring the safety and integrity of systems during seismic events is paramount. This necessity is particularly

## Multi-Directional Bracing For Electrical Conduit, Cable Tray And ...

Multi-Directional Bracing For Electrical Conduit, Cable Tray And Mechanical Piping Systems INTRODUCTION What is Seismic Bracing? Seismic forces are exerted on a building and its contents

## Performance-based optimum seismic design of cable tray system

The seismic performance levels of cable tray systems are presented according to current seismic design codes. A performance-based optimum seismic design procedure for cable tray

## Seismic Bracing Installation Best Practices: Cable

Seismic Bracing Installation Best Practices: Cable Bracing for Trapeze Applications No matter where in the world, building owners should consider the

## Understanding the Seismic Resistance of Cable Trays

In regions prone to seismic activity, ensuring that your cable tray system is capable of withstanding such events is vital. This article will explore the

## Cable Tray Checklist for High-Seismicity Projects

When those elements are coordinated early, cable tray systems can perform far more reliably under earthquake demands. Planning a project in a high-seismicity region? Contact our team

## Seismic Cable Bracing Solutions Guide

Ezystrut offers seismic bracing solutions for cable trays and pipes that comply with Australian standards. They provide two main types of seismic bracing: cable

Seismic analysis and design of electrical cable trays and support ...

The design aspects of electrical cable trays and support systems are discussed from the seismic and structural standpoint. The effects of the inherent flexibility of commonly used cable trays

Table of Contents -Electrical

ELECTRICAL RISER SUPPORT VARIATION OF ELECTRICAL RISER SUPPORT. FIX TRAY TO 41mm STRUT AT 1000mm CENTRES WITH FM1026 ANGLE BRACKETS AND M10 BOLTS AND

Seismic Bracing Ensures Stability and Safety of Cable

Seismic Bracing – Enhancing System Stability and Seismic Resistance Seismic bracing, typically made of high-strength metal, is key component specifically

Understanding the Seismic Resistance of Cable Trays

This article will explore the importance of seismic resistance in cable trays, discuss when seismic braces are necessary, and help you understand how

Seismic Bracing Kit | Seismic Bracing | Wire and Cable Hangers | Wire ...

Connect cables directly to 3/8" threaded rod in trapeze installations for seismic bracing. Use 2 EZ BN 3/8 to attach cables to FAS PCH for sway bracing. Predrilled tabs allow attachment directly to concrete

## Contact Us

For more information, pricing, or custom solutions, please contact us:

Website: <https://sailingpoland.eu>

Email: [info@sailingpoland.eu](mailto:info@sailingpoland.eu)

Phone: +48 537 281 940

Address: ul. Puławska 12, 02-566 Warsaw, Poland

This document is for informational purposes only. Specifications subject to change without notice.

