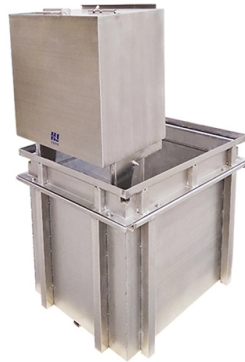


Installation of Waterproof Non-Curing Distribution Box



Overview

Choose the right box based on environment (indoor/outdoor), load capacity, and durability. Check for proper IP/NEMA ratings and material quality. Select the appropriate power distribution box: Select the appropriate box model and specifications based on the project requirements and. (1) Waterproof distribution box engineered for harsh outdoor and industrial environments, providing IP65-IP68 sealing against dust, rain, and UV. Ensure safe placement: install in dry, accessible areas with good ventilation and at appropriate height (typically ~1. Practice good wiring: secure. Strictly speaking, the word “Distribution Box (D-box)” can refer to two categories: electrical distribution boxes and septic tank distribution boxes. This article mainly talks about the first one.

Article Content

Electrical Distribution Box Installation Mistakes

Improper installation location: The installation location of the Electrical Distribution Box should be selected in a ventilated, dry, non-humid and waterproof place.

What is a Waterproof Distribution Box and Why Do You Need One

A waterproof distribution box is an essential component used in various electrical installations to protect wiring and equipment from water damage. Typically constructed from durable,

DB4 Series Waterproof Distribution Boxes Datasheet

Learn how final distribution boards, smart meters, and proper electrical installation design work together to create energy-efficient homes that reduce power waste.

EKDB10 IP65 Waterproof Distribution Box | Industrial

This piece breaks down overcurrent coordination, surge protection, and real-world installation practices that shield crews and assets—with expert insight on

Outdoor Waterproof Enclosure Box – TSM Series Plastic

TSM Series Outdoor Waterproof Enclosure Box are designed to protect electrical components in different environments and industry.

What is a waterproof outdoor distribution box

A waterproof outdoor distribution box shields electrical connections from water, dust, and weather, ensuring safe and reliable outdoor power distribution.

7 Key Features of the Best Waterproof Distribution Box for Ultimate ...

Essential Waterproof Ratings: Understanding IP Standards for Distribution Boxes
When it comes to picking a waterproof distribution box, really getting a grip on IP ratings is super important!

SHK Outdoor MCB RCCB Waterproof Distribution Box

PRODUCT FEATURES It is applicable for special waterproof, dustproof and corrosion-proof locations Executive standard IEC60529, EN 60309, IP65

GDB Waterproof Circuit Breaker Distribution Box

PRODUCT FEATURES It is applicable for special waterproof, dustproof and corrosion-proof locations Executive standard IEC60529, EN 60309, IP65 TECHNICAL DATA

The installation requirements for the distribution box

Before starting the installation, finding a proper place for putting the distribution box is crucial, because it largely decides the safety and convenience

Waterproof Distribution Box Installation Guide 2026

What Proper Waterproof Distribution Box Installation Prevents A waterproof distribution box consolidates multiple DC circuits—from solar strings, battery racks, or EV charging stations—into

Waterproof Distribution Box | IP65 & IP66 Rated

ZCEBOX manufactures IP65 & IP66 waterproof distribution boxes for outdoor and industrial applications. Built with durable materials, CE & ROHS certified. Contact

Waterproof Distribution Box

Our products boast customizable materials and dimensions, ensuring a tailored experience. With a range of materials to choose from and the ability to adjust

SHPN SERIES Waterproof Distribution Box

Keep it Dry: Make sure the distribution box is dry, clean and away from water or moisture. Implement safety measures: check ground wires, install leakage protectors, etc. to reduce the risk of electric

What is a Waterproof Distribution Box and Why Do You Need One

This chart illustrates the distribution of waterproof distribution box usage in residential and commercial settings, how often they require maintenance, the typical warranty period, and the

DB4 Waterproof Distribution Box Overview

The DB4 Series Waterproof Distribution Box is designed to be waterproof, dustproof, and UV resistant with an IP65 protection level. It features a luxurious design

Application Characteristics And Installation Instructions Of Glue ...

The waterproof box of the glue-filled buried cable power distribution block 600v has the following characteristics: 1. It is suitable for all low-voltage power cables, communication cables and

Manufacturing And Installation Requirements Of Waterproof

outdoor junction box should be made of high-quality cold-rolled steel plate, and the thickness of the iron plate of weather proof box should be greater than 1.5mm; the electrical

Key Points Of Installation And Collocation Of Distribution Box In ...

7. The wire inlets and outlets in the distribution box and switch box shall be set at the lower bottom of the box. It is strictly prohibited to set them at the top, side, back or door of the box. The inlets and outlets

Waterproof Distribution Box Manufacturer | IP65/IP66

Selhot Electric offers factory-direct IP65/IP67 waterproof distribution boxes. UV-resistant PC/ABS material, CE/TUV certified, custom knockouts available. Get a

The installation requirements for the distribution box

A distribution box is the heart of any electrical system. It takes the incoming power and safely distributes it to different circuits throughout your

how to install a waterproof electrical box

As an important part of the power system, the installation quality of waterproof distribution boxes directly affects the safe and stable operation of the

How to confirm whether the installation location of the

The electrical distribution box plays a vital role in the power system. It is responsible for distributing electricity to various circuits and equipment.

Waterproof Distribution Box | IP65 Plastic DIN Rail

When a compact panel is needed, the enclosure can be configured as a waterproof electrical distribution panel box with clear labeling and service access. Click-fit

Contact Us

For more information, pricing, or custom solutions, please contact us:

Website: <https://sailingpoland.eu>

Email: info@sailingpoland.eu

Phone: +48 537 281 940

Address: ul. Puławska 12, 02-566 Warsaw, Poland

This document is for informational purposes only. Specifications subject to change without notice.

