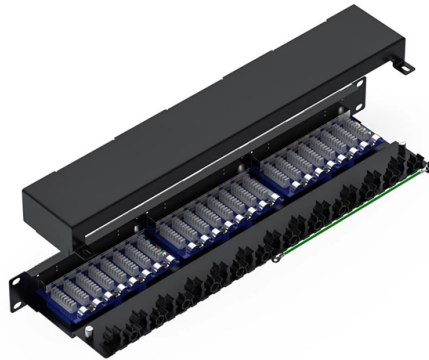


Installation location of main power line in distribution box



Overview

Route the main power cable (often a thick three-wire cable) from the utility meter into the distribution box. A distribution board or distribution box is where the main power supply is distributed to multiple loads. Commercial line box: Designed for commercial facilities such as office buildings and shopping malls, it has a larger carrying capacity and. The position needs to be close to the main power supply to connect. Besides, it should be easy to find and convenient to access by electricians and maintenance personnel, which is helpful to prevent electrical faults and to maintain them. So, here at Rubber Box, we're here to list off some of the key considerations that should be considered when determining the ideal placement for a power distribution box. Circuit Breakers/Fuses: Individual switches that control power to specific circuits.

Article Content

The Essential Guide to Understanding Electrical

5. Consider the layout and physical arrangement: Electrical distribution system diagrams may also include the physical layout of the electrical system, showing

LECTURE NOTES ON

Distribution Board System: In distribution board system, which is most commonly adopted for distribution of electrical in a building, the fuses of various circuits are grouped together on a distribution board,

Where is the best place to put a power distribution box?

However, when it comes to choosing the best location for a power distribution box, there are several factors to consider. So, here at Rubber Box, we're here to list off some of the key considerations that

How to determine the size, installation method and

9) The wood brick and iron parts needed for the installation of the distribution board need to be buried in advance, and the exposed distribution box should be fixed

Power Distribution Boxes Explained Simply

How Does a Power Distribution Box Work? A power distribution box acts like a traffic controller for electricity. It receives power from the main supply

DB BOX(Electrical Distribution Box): Everything You

Learn everything you need to know about the Electrical Distribution Box (DB Box). Explore types, materials, installation tips, etc.

Distribution Box Wiring Steps

Wiring Direction: Wiring between the main circuit breaker and each branch circuit breaker in the box generally goes on the left, and the wiring out of

Power Distribution Boards: Understanding their role

What is a Power Distribution Board? Power distribution boards, also known as a panelboard or fuse box, is a crucial component in both commercial

Residential Electric Meter Box Wiring Diagram Guide

In this guide, we will break down the key elements involved in connecting the main power supply to your home, providing a clear path for a successful setup. We will

Single Phase Distribution Box (DB) Wiring Diagram and

Hey, in this article we are going to see the Single Phase Distribution Box Wiring Diagram and Connection Procedure. A distribution board or

Power Distribution Boxes Explained Simply

Learn what a power distribution box is, how it works, key components, types, and why it's vital for safe and efficient electrical systems.

The Complete Guide to Distribution Box: Installation, Types & More

Proper installation of a distribution box requires careful planning and adherence to electrical codes. While major installations should always involve qualified electricians, understanding

How to Install a Cable Distribution Box Safely and

Conduct a detailed survey of the installation site to determine the installation location of the cable distribution box. The installation location should

Step-by-Step Guide to Install MCB Distribution Box

Learn how to safely install an MCB distribution box with this comprehensive guide. Step-by-step instructions to ensure correct installation.

Requirements And Specifications For Installation Of

In flammable and explosive environments, explosion-proof distribution boxes should be selected and explosion-proof treatment should be carried out.

Understanding Distribution Boxes: A Comprehensive Guide

The right distribution box depends on the installation environment, protection level, load requirements, and application type. By understanding the

Main Distribution Board (MDB): The Backbone of Safe

A Main Distribution Board (MDB) might seem like just another box on the wall, but as you've seen, it's the nerve center of any electrical system. From

How to Install a Distribution Box—A Comprehensive

Before starting the installation, finding a proper place for putting the distribution box is crucial, because it largely decides the safety and convenience

A Step-by-Step Guide to Wiring an Electrical Panel Box

A Step-by-Step Guide to Wiring an Electrical Panel Box An electrical panel box, also known as a breaker box or a distribution board, is a crucial component of any

Distribution Box Installation: A Complete Guide to Safe

In this comprehensive guide, we'll cover everything you need to know about distribution box installation, from the basics to the step-by-step installation

Understanding Powerline Diagrams: An Essential Guide

A powerline diagram is a visual representation of the electrical power distribution system in a building or facility. It shows the connections, components, and flow of

How to confirm whether the installation location of the

Ensuring that the installation location of the box is reasonable is the basis for ensuring the safe and efficient operation of the system. The following are

The installation requirements for the distribution box

Learn how to install a distribution box safely and correctly. Covers wiring, placement, standards, and expert tips for a compliant setup.

Distribution Boxes Explained: Types, Functions, and

Learn about distribution boxes, their types, functions, and safety features to ensure efficient and secure electrical power distribution in any building.

Contact Us

For more information, pricing, or custom solutions, please contact us:

Website: <https://sailingpoland.eu>

Email: info@sailingpoland.eu

Phone: +48 537 281 940

Address: ul. Puławska 12, 02-566 Warsaw, Poland

This document is for informational purposes only. Specifications subject to change without notice.

