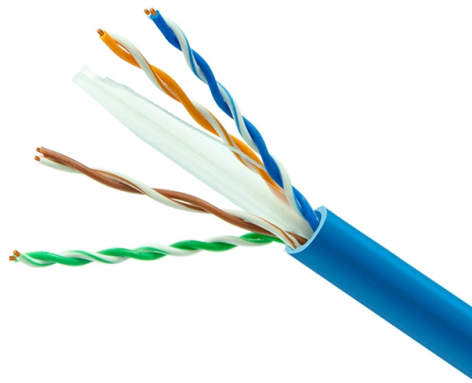


## Installation Requirements for Electrophoresis Modules in Distribution Boxes



### Overview

Check for proper IP/NEMA ratings and material quality. Ensure safe placement: install in dry, accessible areas with good ventilation and at appropriate height (typically ~1. Practice good wiring: secure grounding, neat cable management, proper insulation, and correct wire. This document outlines the supplies, consumables, space and utility requirements for a G7100 Capillary Electrophoresis Instrument. This. to ensure accuracy, Bio-Rad assumes no liability for errors, or for any damage resulting from the application or use of this that the IQ/OQ protocols be performed in total when the Experion automated electrophoresis station and software are initially installed. Installation qualification should. Instrument qualification is becoming increasingly important to analytical laboratories. Good Laboratory Practice (GLP). AB Sciex is doing business as SCIEX. AB SCIEX™ is being used under license. Prior to using the system, refer to the PA 800 Plus Pharmaceutical Analysis System. Agilent provides this customary commercial license in Software and technical data pursuant to FAR 12. 212 (Computer Software) and, for the Department of Defense, DFARS 252.

## Article Content

### Electric Panel Installation Method Statement

This document provides a method statement for installing and terminating electric panels and distribution boxes. It outlines 4 steps: 1) Pre-installation preparation

### How to Set Up Gel Electrophoresis: A Detailed Procedure

Learn to expertly set up gel electrophoresis. This detailed guide covers every step from preparation to successfully initiating your experiment.

### PASSIVE DISTRIBUTION BOXES

Murrelektronik's passive distribution boxes provide a much more convenient method for connecting sensors and actuators to the control cabinet. Murrelektronik supplies a comprehensive range of

### Installation Qualification Protocol Agilent Capillary

This installation qualification protocol will be performed on the equipment specified in Section VI. The equipment specified comprises an Agilent capillary

### PASSIVE DISTRIBUTION BOXES

Fewer terminal blocks, fewer cable entry systems, and fewer terminal boxes in the field are distribution box solutions that save space and also offer flexible mounting options.

### High Voltage for Electrophoresis

The DPS series includes high voltage power supply modules with output voltages up to 6 kV in a compact and easily mountable housing. The maximum power is 12

### Installation Qualification/Operational Qualification Protocols and ...

Installation Qualification (IQ) determines if the Experion automated electrophoresis station and software are properly installed. Installation Qualification tests should be performed at the following times:

### OpenLab CDS Requirements and Supported Instruments

With an OpenLab CDS client/server installation, you need multiple hardware components. On client PC or the Analytical Instrument Controllers (AICs) the OpenLab CDS software provides the

### Installation Qualification/Operational Qualification Protocols and ...

I have reviewed the IQ/OQ document and agree that it provides the appropriate procedures for the Installation Qualification/Operational Qualification of the Experion automated electrophoresis station

## A1, A2, A3-1, A5, and A6 Horizontal Electrophoresis Systems User

This product is required to comply with the European Union's Waste Electrical & Electronic Equipment (WEEE) Directive 2002/96/EC. It is marked with the WEEE symbol.

### Microsoft Word

GENERAL Electrical installations must comply with the current electricity standards in the host country and canton (Switzerland and Geneva) and must comply with the applicable requirements, rules and

### Construction of a General Platform for Capillary Electrophoresis

Guided by the design requirements above, this chapter will describe the design, constructions, adjusting and the verifying process of this general electrophoresis platform in detail, including the optical

The installation requirements for the distribution box

Learn how to install a distribution box safely and correctly. Covers wiring, placement, standards, and expert tips for a compliant setup.

### Electrophoresis Power Supplies

All trademarks used herein are the property of their respective owner. 2026 Bio-Rad Laboratories, Inc.

### Design requirements and standards for low voltage

Regularly inspect and maintain your distribution box to catch issues early and ensure safe operation. Design requirements for low voltage distribution

ITPro Today, Network Computing, IoT World Today combine

ITPro Today, Network Computing and IoT World Today have combined with TechTarget . The page you are looking for may no longer exist.

### Preparing High-Quality Samples for Electrophoresis:

This guide details crucial steps and best practices for preparing high-quality nucleic acid and protein samples, a prerequisite for accurate

### Agilent G7100x Capillary Electrophoresis System

This document is designed to prevent delays during installation, familiarization, and the initial use of the system in your application. This document outlines the supplies, consumables, space and utility

### Agilent G7100x Capillary Electrophoresis System

Your site must meet this specification or set of requirements to assure a successful and timely installation of your Agilent instrumentation. This document is designed to prevent delays during

#### PA 800 Plus Pharmaceutical Analysis System

The amount of time required for sample molecules to migrate to the detector depends on the length of the capillary, the electrophoretic mobilities of the particular sample molecules, the specific electrolyte

#### ICS-5000 System Installation Qualification

Installation Qualification covers all procedures relating to the installation of instruments in a specific environment. IQ confirms that the instrument(s) were received as ordered and that the environment

#### PA 800 Plus Pharmaceutical Analysis System Overview Guide

It is against the law to copy, modify, or distribute the software on any medium, except as specifically allowed in the license agreement. Furthermore, the license agreement may prohibit the software from

Summary of key points for construction and installation of distribution ...

The construction and installation points of distribution boxes and switch boxes are summarized as follows: 1. Select qualified products that meet national standards and safety requirements.

## Contact Us

For more information, pricing, or custom solutions, please contact us:

Website: <https://sailingpoland.eu>

Email: [info@sailingpoland.eu](mailto:info@sailingpoland.eu)

Phone: +48 537 281 940

Address: ul. Puławska 12, 02-566 Warsaw, Poland

This document is for informational purposes only. Specifications subject to change without notice.

