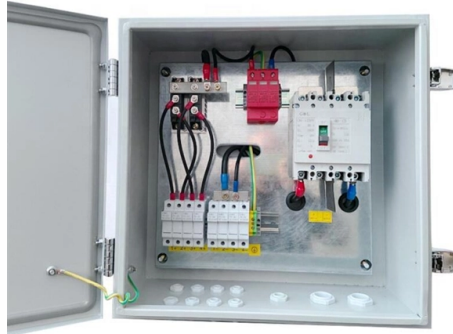


## Indicator lights on fiber optic ring network switches



### Overview

The LEDs have three possible states: no light, a steady light, and a flashing light. Flashing lights may be slow, fast, or flickering. 1 Available only on switches with 10G ports. System is. A fiber optic ring network is a physical or logical network topology where devices (usually switches) are connected in a closed-loop using fiber optic cables. Each node is connected to two other nodes, forming a ring-like structure. This is normal; it does not indicate a problem unless the LEDs do not indicate a healthy state after all boot. Switches have LEDs for indicating power status, port status, link status, error indication, troubleshooting and performance monitoring. The LED colors for the switch and their corresponding status indications are as follows ; To Select or change a mode, press the mode button until the desired mode. The UID LED is a debug feature, that the user can use to find a particular system within a cluster by turning on the UID blue LED. To activate the UID LED on a switch system, run: To verify the LED status, run: To deactivate the UID LED on a switch system, run: By utilizing two pairs of two lanes.

## Article Content

Don't Ignore the Lights! Understanding Indicator Lights on Routers ...

In many organizations, the blinking lights on network switches and routers are often overlooked—until something goes wrong. But these tiny LEDs are powerful first-level troubleshooting

Fiber Optic Ring Network Design Explained: Topologies,

Learn how to design a fiber optic ring network with practical diagrams, topologies, and switch setup tips. Explore ring network switch options for

Fiber Optic Ring Redundancy Design for Industrial Ethernet Switches

Looking ahead, the integration of TSN, zero trust security, and other technologies will further propel fiber optic ring redundancy design toward "deterministic networks," providing robust support for smart

Network Redundancy and Ring Topologies

Many different types of ring technologies can enhance network redundancy. To better understand network redundancy and ring topologies, continue reading.

Glasfaser-Ringnetzwerkdesign erklärt: Topologien, Diagramme und Switch ...

Erfahren Sie, wie Sie ein Glasfaser-Ringnetzwerk mit praktischen Diagrammen, Topologien und Tipps zur Switch-Einrichtung entwerfen. Entdecken Sie Ringnetzwerk-Switch

Multi-Drop Ethernet Fiber Optic Switch

The TC3720 10/100M 6-Port Self-Healing Ring Ethernet Switch is a low cost solution for linking multiple RTUs & PLCs in industrial and SCADA fiber optic networks.

Understanding LEDs on Network Switches

A broken fiber-optic cable, other cabling problems, or a port issue could cause this one-way communication. You can enable UniDirectional Link

Safety Ring Switch

The Ring Switch allows you to implement the traditional star topology, or ring topology to take advantage of network path redundancy. The switch can be used right out of the box without configuration; or

LED Notifications

When a logical connection is made the LED will change to green. When data is being transferred the light will blink green.

Troubleshoot Fiber Links on Catalyst 9000 Series Switches

This document describes how to troubleshoot fiber optic interfaces by addressing some of the fiber optic module and cabling specifications.

What the six indicators of the fiber media converter

When the fiber media converter is operating normally, PWR power indicator must be lit, FX-LINK / ACT fiber link indicator, TX-LINK / ACT network

Ring and Ping: Quick Tips for Fiber Optic Troubleshooting

Troubleshooting Common Fiber Optic Problems: Quickly identify and resolve issues with Ring and Ping's tips for optimal speed and connectivity.

Fiber Optic Switches and Their Uses

Fiber Optic Switches and Their Uses Most of us are well aware of the use of fiber optics in local and wide area networks. These networks can be small, spanning relatively short distances (LANs) such

Interpreting LED activity

Interpreting LED activity System activity and status can be determined through the activity of the LEDs on the switch. There are three possible LED states: no light, a

Using Diagnostic LEDs for Network Connection Issues

Learn how to effectively utilize device-specific diagnostic LEDs to troubleshoot and localize network connection problems, including interpreting LED states, isolating issues, advanced

Fiber Ring 2026

A fiber ring is a network topology that connects multiple locations in a circular configuration using fiber optic cables, creating a self-healing communications loop. This architecture provides redundant

Differences Between Industrial Ethernet Fiber Optic

All N-TRON switches offer dual power supply inputs to eliminate the possibility of a single power supply failure bringing the network down. Star topology also allows

Managed Redundant Ethernet Switch

The TC3340 Redundant Gigabit Ethernet Switch Substation is a rugged, cost-effective networking solution for both industrial and commercial fiber networks. It

How to deal with the malfunction of the fiber optic transceiver indicator

A, such as the optical transceiver (FX) indicator light does not shine, please confirm whether the fiber link cross links? A fiber jumper is parallel to receive; the other end is connected with the cross.

Interpreting LED activity

System activity and status can be determined through the activity of the LEDs on the switch. The status LEDs can display solid amber or flash during boot, POST, or other diagnostic tests.

## Decoding the Lights on Your ONT: A Comprehensive Guide

The Optical Network Terminal (ONT) is a crucial device in modern telecommunications, serving as the interface between your home network and the fiber-optic internet connection provided

## What is a Fiber Ring & its Advantages

Understanding Fiber Rings: Key Concepts and Terminologies in Fiber Optic Networks Explore the essential terms and concepts around fiber rings, including

### FIBER OPTICAL COMMUNICATION RING

Fiber optical communication ring is a ring network which consists of multiple fiber optical termination boxes connecting hand by hand in a circle, where one node broken won't disturb the master fiber

## Interpreting Port-Side LEDs

The LEDs have three possible states: no light, a steady light, and a flashing light. Flashing lights may be slow, fast, or flickering. The lights are green or amber. Sometimes, the LEDs may flash any of the

## Contact Us

For more information, pricing, or custom solutions, please contact us:

Website: <https://sailingpoland.eu>

Email: [info@sailingpoland.eu](mailto:info@sailingpoland.eu)

Phone: +48 537 281 940

Address: ul. Puławska 12, 02-566 Warsaw, Poland

This document is for informational purposes only. Specifications subject to change without notice.

