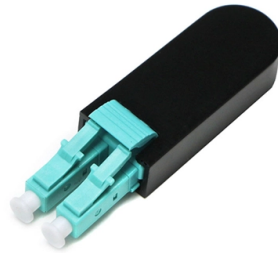


How to calculate the load of the front shelf cabinet



Overview

Calculate maximum shelf length, load capacity, and deflection for wood shelves, plywood, and MDF. Includes material specifications, sag calculator, and strength analysis for. Compute allowable shelf loads from strength and deflection criteria for common materials. Switch between design and check modes, then download tidy reports as needed. Choose units first; conversions run automatically. You can also specify an edging strip to further stiffen the shelf. Books and heavy items: 16" max spacing. Why Shelf Span Matters A shelf's load capacity is primarily determined by the span — the unsupported distance between brackets or wall supports. Hey there!

☐☐ Before you go setting up those heavy-duty shelves, let's break down the.



Article Content

Shelf Design Calculator

Calculate lumber, hardware, and load capacity for custom shelf construction. Get material lists and professional installation guidance.

How Can I Calculate My Racking Load Capacity?

Determining the racking load capacity in your warehouse or distribution center is vital for ensuring safety and efficiency. Follow these steps to calculate it.

How To Calculate Rated Capacity On Shelving

Calculating the load capacity of shelving is vital before you begin placing any heavy objects onto the shelves. If you overestimate how much the

Bookshelf Load Capacity Calculator

Bookshelf Load Capacity Calculator Editorial review by: JJ Ben-Joseph Introduction: why Bookshelf Load Capacity Calculator matters In the real world, the hard part is rarely finding a formula—it is

calculate shelf beam size based on load?

Total load in pounds = $FBd^2 / 9L$. Fill in the parts of the formula that are already known. L stands for the span of the beam, in feet. In the example, the beam spans the 10-foot width of the

Shelf Load Capacity Calculator

1. What is the Shelf Load Capacity Calculator? Definition: The Shelf Load Capacity Calculator estimates the maximum weight (L C) a shelf can support using the formula $L C = 4 / 3 \times M S \times W \times T / 2 L$, based

Shelf Load Calculator

Shelf Load Calculator Compute allowable shelf loads from strength and deflection criteria for common materials. Switch between design and check modes, then download tidy reports as needed. Meta

How Much Weight Can A Kitchen Cabinet Hold? Max Limits

Install Under-Shelf Supports: You can buy or make brackets that attach to the underside of a shelf and extend to the shelf below or to the cabinet base, providing crucial support against

Shelf Load Capacity Calculator

Shelf load capacity is the maximum weight that a shelf can support without failing. It is determined by the material properties, such as strength and elasticity, as well as the dimensions of the shelf, including

New Ways to Calculate Cabinet Space

Cabinet depth in feet: Different cabinets have different shelf depths and designs that affect how much space is actually available for storage. Use the

Count Koala

Enter the width of the shelf in inches in the "Shelf Width" field. Click the "Calculate Load Capacity" button to estimate the total weight your shelf can support. The

How can I estimate the load capacity of a set of shelves?

The Ikea cabinets may have max load information on the packaging or assembly manual. For example, this bookcase lists its max load per shelf as 66 lbs near the bottom of the page on the product

The Sagulator - WoodBin

The Sagulator helps you design shelves by calculating shelf sag (deflection) given type of shelf material, shelf load, load distribution, dimensions, and method of attachment. You can also specify an edging

Pallet Racking Weight Capacity: How to Calculate Load

Wondering how to calculate pallet racking weight capacity? This detailed guide shows you everything you need to know.

How to Determine the Weight Capacity of a Shelf

A practical guide to understanding load types, estimating safe capacity, and applying structural techniques to reinforce any shelf system.

Shelf Sagulator

Calculate shelf sag and deflection with our professional beam deflection calculator. Find the strongest materials for your shelving project. Features wood species database and engineering formulas.

How much weight can a shelf hold? Find out which

Want to quickly gauge how much your shelf can really hold and how to test it safely at home? This guide blends hands-on tips with simple math to avoid sagging,

How To Calculate Load Capacity for Shelf Brackets

Calculating the load capacity for shelf brackets is one of the most critical aspects of any home improvement project involving shelving. With

Shelf Span Calculator — Free Furniture Design Tool | WoodCalcs

Calculate maximum shelf span before sagging based on material and load. Free online calculator, no signup required.

Count Koala

Click the "Calculate Load Capacity" button to estimate the total weight your shelf can support. The calculator will show the estimated load capacity based on the

Shelf Sag Calculator — Maximum Span, Load Capacity

Find maximum unsupported shelf length, load capacity by material, and deflection analysis. Includes MOE values for 10+ wood species, bookshelf

How to Calculate Wooden Shelf Weight Capacity: Factors & Formulas

Learn how to calculate wooden shelf weight capacity using beam deflection formulas. Understand how wood species, thickness, span length, and mounting affect shelf strength.

Shelf Load Calculator

Estimate safe shelf loading using span, section size, and material limits. Compare bending stress and deflection targets. Export results to files for documentation quickly online.

Shelf Load Capacity Calculator

Calculate the maximum safe load for a shelf based on material, width, and span between supports. Get recommended weight limits with safety margin.

Calculate Shelf Sag

Enter the shelf material (the calculator handles hardwoods, softwoods, and sheetgoods), shelf thickness, width, and length, and the load on the shelf, and the

Shelf Load Capacity Calculator

Calculate shelf load capacity, deflection, and bracket spacing from material strength, dimensions, load, and sag limit for shelves.

Contact Us

For more information, pricing, or custom solutions, please contact us:

Website: <https://sailingpoland.eu>

Email: info@sailingpoland.eu

Phone: +48 537 281 940

Address: ul. Puławska 12, 02-566 Warsaw, Poland

This document is for informational purposes only. Specifications subject to change without notice.

