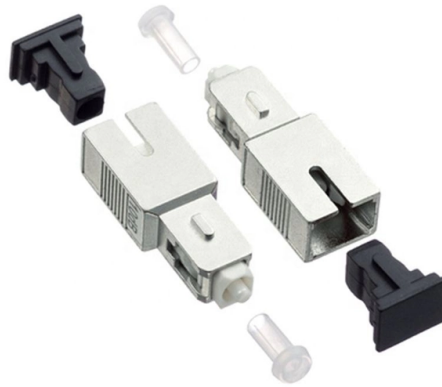


How many grounding wires are appropriate for a distribution box



Overview

26 mm² (10 AWG) ground wire must be used, and in all other markets a 6 mm² must be used. Power from factory ground must be installed by a qualified electrician. Grounding of the units: Attach a ground wire from one of. The National Electrical Code (NEC) provides clear guidelines for ground wire sizing through Table 250. 122, but understanding how to apply these requirements correctly can make the difference between a safe installation and a costly code violation. Proper grounding conductor sizing is critical for. Whether you're a seasoned pro or just starting out, this comprehensive guide will give you practical insights into proper grounding techniques, with a special focus on how selecting quality materials from a reliable building material supplier impacts your entire system's safety and longevity. Tip: Do not put too many wires in a box. Each one has good and bad points. Choose the right box based on environment (indoor/outdoor), load capacity, and durability. Select a well-ventilated and dry place to avoid poor heat dissipation causing equipment.

Article Content

Distribution System Grounding

Improper grounding in secondary systems can cause safety issues including fire and failure of equipment in homes. Most common problems are open secondary neutral, load incorrectly

Grounding system construction: key points for grounding distribution ...

Why Grounding Isn't Just a "Nice-to-Have" - It's Your Silent Guardian Let's cut through the technical jargon for a second. Grounding systems aren't just boxes and wires - they're the silent

Ground Wire Size Chart NEC 2026: Complete

NEC Table 250.122 is the primary reference for determining the minimum size of equipment grounding conductors based on the rating of the

How to determine the size, installation method and

(1) Wiring method of distribution box 1) Generally, the incoming line of power distribution box adopts five wire system, that is, a, B and C three-way phase line

Electrical Panel Grounding and Bonding

The topic of grounding and bonding is a never ending area of confusion. The difference between a service panel and a sub panel is also muddy in many

How to Install a Cable Distribution Box Safely and

Misconception: If the cable distribution box is not grounded or has poor grounding, it is easy to cause electric shock accidents when the box is

Grounding Do's and Don'ts: Essential Best Practices for

The equipment grounding system for all panels, transformers and equipment must begin at this point. Do not install neutral-ground bonds at subpanels directly

Can you include multiple ground wires in an electrical box?

NEC specifies that the number of wires, including the ground wires, should not exceed the box's fill capacity. Overcrowding the box can lead to safety hazards,

The Importance of Ground Wires in the Breaker Box: A

The ground wire in a breaker box is a crucial element of an electrical system, providing safety and preventing electrical shocks. Learn more about its

NEC Code of Junction Box Requirements Made Simple

You must connect all ground wires together inside the junction box. The NEC says you can use a pigtail, which means twisting the ground wires and adding a short

DISTRIBUTION BOX

Each DISTRIBUTION BOX and controller must be grounded. On the US market, a 5.26 mm² (10 AWG) ground wire must be used, and in all other markets a 6 mm² must be used.

Grounding Practices in Power Distribution Systems

Electrode Placement: In order to maximize the performance of the grounding system, it is recommended that grounding electrodes, which include rods and plates, be

Protective grounding requirements for transmission and distribution ...

Introduction to protective grounding This technical article covers protective grounding requirements for steel tower and wood

Grounding and UL 508A Standards

Table 15.1 lists the specific size for each current, from a minimum of 15 amps, providing a wire no smaller than 14 AWG (for copper) and 12 AWG (for

The Complete Guide to Distribution Box: Installation, Types & More

Blog The Complete Guide to Distribution Box: Installation, Types & More By Admin Aug 2, 2025 No Comments # distribution box Introduction Electrical systems power our homes, offices, and

Requirements And Specifications For Installation Of

The metal box of the distribution box, the electrical installation board, and the metal base and casing of the electrical appliances in the box must be

Size determination, installation method and wiring mode

The distribution box is the central hub of the home circuit and the general control of our daily power consumption. It is an indispensable electrical equipment. If there

IEEE 525-2007_accepted

IEEE-SA Standards Board Abstract: The design, installation, and protection of wire and cable systems in substations are covered in this guide, with the objective of minimizing cable failures and their

The installation requirements for the distribution box

Learn how to install a distribution box safely and correctly. Covers wiring, placement, standards, and expert tips for a compliant setup.

Grounding Paper

For purposes of grounding calculations, the concentric neutral on older underground residential distribution cables with bare neutral wires in direct contact with earth (not in conduit) can be treated

Protective grounding requirements for transmission and distribution ...

Protective grounds must be installed so all phases of lines or cable are visibly and effectively bonded together in a multi-phase

Grounding System Installation Standards for Distribution Boxes and ...

Whether you're a seasoned pro or just starting out, this comprehensive guide will give you practical insights into proper grounding techniques, with a special focus on how selecting quality materials

Distribution Box Wiring Steps

The size of the ties should be appropriate and the spacing should be uniform to ensure that the wires are straight and without ribs. Marking and

Contact Us

For more information, pricing, or custom solutions, please contact us:

Website: <https://sailingpoland.eu>

Email: info@sailingpoland.eu

Phone: +48 537 281 940

Address: ul. Puławska 12, 02-566 Warsaw, Poland

This document is for informational purposes only. Specifications subject to change without notice.

