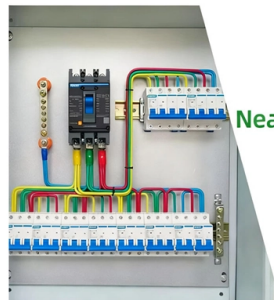


How high is the rail cable tray above the ground

DETAILS DISPLAY



Focus On Every Detail



01

Neat & Clean
Layout



Cleaner arrangement
of components,
Easy to operate

Overview

Clearances: Maintain at least 12 inches of vertical clearance above trays for installation and maintenance access (2026 NEC update). Hubbell's NEXTFRAME® Ladder Tray is the effective and widely used cable runway that supports and delivers bundles of cable between cabinets, racks, and closets, along walls, and suspended from ceilings. The Ladder Tray features light, rugged, tubular steel construction. It is designed for. When developing our cable support OBO can offer reliable solutions for systems, three attributes are at the routing and fastening cables securely core of what we do: efficiency, resil- for each of these installation challeng-ience and safety. These systems, made from metal or plastic, are open structures designed to support electrical conductors, ensuring proper organization and safety. Here's what you need to know: Cable Types: Only use. us-trations without notice. All illustrations, descriptions and technical information included in this document are provided as indications and can cable trays are equivalent.



Article Content

Supplier of power cables, cable tray & cable raceway in

PowerTel & his associated factories can provide you a wide of range of low, medium. high voltage power cable, and its cable tray & raceway, including

The Complete Guide to Cable Trays | Snake Tray

Solar Snake Max is the industry's only above ground cable conveyance system that manages high amperage cables in free air. It eliminates the need to de-rate

Best practices for underfloor cable management

Good cable organization ensures optimal performance and simplifies cable maintenance, reducing downtime. All cables should be supported in cable tray that is run overhead, above the equipment or

NEC Article 392 Guide: Ensuring Compliance for Cable

A cable tray should not be overstuffed to ensure that a building is safe. Filling the tray does not necessarily mean till the very last drop, as a bucket;

EP 20 00 00 03 SP

A cable tray, cable ladder, duct or conduit and includes fasteners brackets and supporting structure(s) erected specifically for the cable installation system. Any cable restraints used to attach the cable to

Cable tray installation | Information by Electrical Professionals for ...

Cable tray Cable tray Most of the tray will be installed above network racks, and there will be a few crossover points that will pass over the walkway to connect the rows . We are >8" AFF

Explaining NEC Article 392 on Cable Trays

NEC Article 392 explains cable trays, their components, appropriate wiring methods for cable trays, and instances where they are and are not

Cable Tray Trunking & Ladder Installation Method for

Resources For Electrical & Electronic Engineers Cable Tray Trunking & Ladder Installation Method for Projects The purpose of this article is to define the

Practices for grounding and bonding of cable trays

Grounding and bonding of cable trays There are three wiring options for providing an EGC in a cable tray wiring system: An EGC conductor in or on

A Guide to Installing and Supporting Electrical Cable Trays

This guide covers the critical steps, from selecting the right electrical cable tray and performing accurate cable fill calculations to managing a safe cable pull through

Grounding Requirements for Electrical Cables, Cable Trays, and

Guidelines for grounding electrical cables, busbars, and cable trays in wiring projects, ensuring safety and compliance with industry standards.

B-Line series Cable Tray Design Considerations

If these cables above would completely fill a 30-inch wide cable tray, selecting a 36-inch wide tray in your design would make space available for future cables.

Understanding Cable Tray Grounding: A

Cable tray grounding is an indispensable aspect of electrical installations that plays a pivotal role in ensuring safety, reliability, and efficiency. It

Best Practice Guide to Cable Ladder and Cable Tray Systems

This guide covers cable ladder systems, cable tray systems, channel support systems and associated supports intended for the support and accommodation of cables and possibly other electrical

Cable Tray Institute

The Cable Tray Institute (CTI) was founded in 1991 to support the cable tray industry by engaging in research, development, education, and the dissemination of

Cable Tray Installation Rules (NEC 392) - Electrical Trader

Here's what you need to know: Cable Types: Only use conductors rated for open-air environments, such as Tray Rated (Type TC) or Metal-Clad (Type MC) cables.

Clearances: Maintain

Best Practice Guide to Cable Ladder and Cable Tray Systems

Cable ladders and cable trays should be mounted far enough off the floor or roof to allow the cables to exit through the bottom of the cable ladder or cable tray.

Cable Tray Installation

Learn everything about cable tray installation with our complete guide. Discover types, steps, and safety tips for efficient electrical cable management.

GENERAL INFORMATION

Cable trays or raceways often provide a convenient, safe and efficient method of fiber optic cable installation. Trays can be installed in ceilings, below floors and in riser shafts. When installing fiber

GUIDE CABLE TRAYS TECHNICAL

cable trays are equivalent. The mechanical and electrical characteristics, tests, certifications, overall quality management, recommendations mentioned in this technical guide only apply to our own cable

Guide to cable support systems

Therefore, it can generally be assumed that a system of, for example, 60 mm rail height per metre of cable tray or cable ladder will produce a value of 15 kg per 100 mm width.

Cable Tray Technical Guide A practical guide to product selection and ...

In designing supports for a cable tray system, consideration should be given to the loads associated with future cable additions and any additional loading that may be applied to the cable tray system (e.g.,

INSTALLATION GUIDE

For straight lengths; dunnage should be placed no closer than 1/4 of the tray from its ends if using 2 supporting points.

Contact Us

For more information, pricing, or custom solutions, please contact us:

Website: <https://sailingpoland.eu>

Email: info@sailingpoland.eu

Phone: +48 537 281 940

Address: ul. Puławska 12, 02-566 Warsaw, Poland

This document is for informational purposes only. Specifications subject to change without notice.

