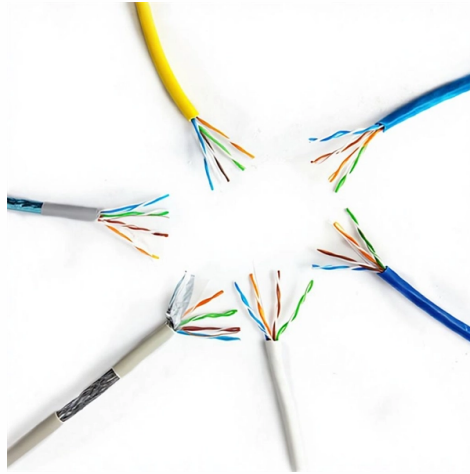


High-density access switches



Overview

● High port density design : Access switches maximize the number of ports they can provide, minimizing space usage and reducing cabling complexity. Data centers today demand secure, scalable, and high-performance switching with efficient power use. The next-gen 400G Extreme 8730 switch delivers exceptional density, power efficiency, and flexible connectivity—ideal for high-performance enterprises, hyperscale cloud, and I/O-intensive. CloudEngine Data Center Switches — Ethernet switches widely used in diverse applications and in different network sizes, in both data centers and high-end campus networks — feature network scaling, automation, programmability, and real-time visibility. It provides powerful hardware forwarding capacity and abundant data center features. It provides up to 32*100G ports and 2 out-of-band management ports (one fiber port and one copper. Network switches help hold up these high-density networks and form the backbone of most large-scale enterprises. Access switches are known for their low costs and high port density, making them ideal for various application scenarios, such as offices, small equipment rooms. Traditional switches that were sized for moderate traffic volumes can stumble: microbursts cause buffer overflow, ports become congested, latencies jump, and thermal overloads trigger resets.

Article Content

Data Center Switches RG-S6580-48CQ8QC Data Center 100G High-Density ...

Data Center 100GE Access Switch RG-S6580-48CQ8QC The RG-S6580-48CQ8QC is a high-density access switch and provides various ports within the space of 1 RU. With improved data forwarding

NSComm Switches for High-Density Networks in 2025

In this article we'll explore the demands of dense networks, the architecture behind NS Comm's solution, real deployment cases, benchmark

High Density Wi-Fi Deployments

High Density Wi-Fi Deployments Last updated Apr 29, 2026 Save as PDF Table of contents Estimate Aggregate Application Throughput Estimate Device Throughput Estimate the

Data Center Switches

Newly launched modular switches tailored for the AI era, providing ultra-high-density port options ranging from 100GE to 400GE, supporting enterprises in building

RUCKUS Wireless Access Points

Experience seamless wireless connectivity with RUCKUS access points. Our solutions are designed to handle high-density environments and challenging

8730 | Extreme Networks

The next-gen 400G Extreme 8730 switch delivers exceptional density, power efficiency, and flexible connectivity—ideal for high-performance enterprises,

Network Switches for Business Environments | Omada

Access Plus Switches: Designed for high-density edge deployments, these switches include 10G uplinks that overcome gigabit uplink bottlenecks, ensuring efficient

What is an access switch and how to select access switches?

Access switches are known for their low costs and high port density, making them ideal for various application scenarios, such as offices, small equipment rooms, departments with frequent

Choose access layer switch for the access layer network

In a high-density access network environment, it is important to consider simplifying the network deployment and management of numerous end devices. Accordingly, access switches

FS Access Switches Selection Guide for Your Networks

In today's interconnected world, choosing the right access switch is crucial for ensuring efficient network performance. This guide will help you

Cisco Nexus 3550-H High-density Layer 1 Switch Data

The Cisco Nexus 3550-H features a powerful x86-based management CPU, dual (1G and 10G) Ethernet management interfaces, USB and RS232-based console

Wireless High Client Density Design Guide

This design guide provides updated engineering guidelines and practical techniques for designing, planning, and implementing a wireless LAN

H3C S9850 Series Data Center Switches-H3C

Explore how network switches handle challenges in high-density environments, like data centers and enterprise networks. Learn about advanced features and cost-saving implementations

QFX5100 Series 10/25/40/100GbE Switches

The QFX5100 Series are access & top-of-rack 10/25/40/100GbE switches, optimized for application delivery & virtualized data centers.

Best 10Gb Switch for SMB in 2025: Unlock Next-Gen Network

Choosing the Right Switch: Core Features to Consider Port Density: Ensure sufficient 10Gb ports to accommodate current and future devices. Performance: Prioritize low latency and high

RUCKUS Networks -

Smarter, faster, more reliable networks for every campus and enterprise Trusted in high density, high interference network environments. Built to scale as devices,

What is an access switch and how to select access switches?

An access switch serves as an interface for end-user devices to connect to the network, providing essential data transmission services. Access switches are known for their low costs and

Cisco Catalyst 9500X High Density 1-Year License | Enterprise Network

Keep Catalyst 9500X features active for 1 year with Cisco DNA licensing. Align advanced network operations, policy control, and lifecycle value.

Best Practices to Optimize Wi-Fi Performance in High

Achieving reliable connectivity in high-density areas can be challenging. Here are the best practices to optimize your Wi-Fi network in

NSComm Switches for High-Density Networks in 2025

Discover how NSComm fast-ethernet switches sustain ultra-high throughput and rock-solid reliability in dense enterprise and data-center

Data Center Switches

DS3000 series data center switches are the new generation of high-performance, high-density access/ aggregation switches launched by Wavetel for data centers, with switching capacity from 800Gbps to

Solved: What is "high port density"?

Hi all, I am preparing for BCMSN exam. In defining access layer switches, cisco recommends to use devices that has "high port density"? What does this expression mean? Thanks

What Defines a High-Density Switch? Can It Handle Modern

The core question is whether a single switch can effectively balance high port density, non-blocking performance, and simplified management without compromising reliability.

Contact Us

For more information, pricing, or custom solutions, please contact us:

Website: <https://sailingpoland.eu>

Email: info@sailingpoland.eu

Phone: +48 537 281 940

Address: ul. Puławska 12, 02-566 Warsaw, Poland

This document is for informational purposes only. Specifications subject to change without notice.

