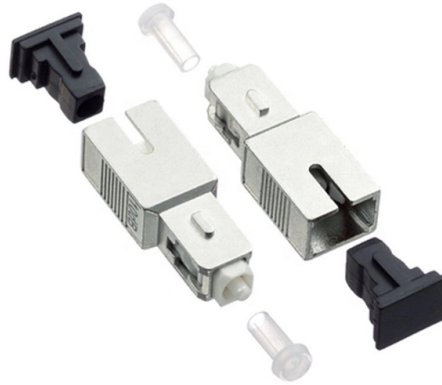


Distribution boxes should be every



Overview

How often should a Distribution Box be maintained?

Routine inspection every six months is recommended. High-load or harsh environments may require more frequent checks. Distribution Boxes are used across nearly every industry, including: Their adaptability makes DB Boxes indispensable in both traditional and smart power distribution systems. This essential piece of equipment serves as the nerve center of your electrical system, managing power flow. In the safe and effective supervision of electrical systems, distribution boxes may be the last quite unnoticed yet they are extremely fundamental part. It takes the incoming power and safely distributes it to different circuits throughout your building. The best box keeps your electrical system safe and ready for changes later.



Article Content

Choosing a suitable distribution box and what should be noted

You should pick a distribution box by thinking about your safety, what you need, and how much you can spend. The best box keeps your electrical system safe and ready for changes later.

Explore Distribution Boxes for Every Setting with Different Types ...

Home » Blog 2 » Articles » Explore Distribution Boxes for Every Setting with Different Types, Prices and Factors Distribution boxes act as the central hub, receiving the main electrical

Understanding Distribution Boxes: A Comprehensive Guide

Learn what a distribution box is, its types, and how to choose the right one for your project. Includes clear examples and expert tips.

12 types of distribution boxes and how to choose them

How to Choose the Right Distribution Box: Your Step-by-Step Guide So, you've seen the options—now what? Choosing the best distribution box isn't rocket science, but it does need a bit of thought. I'll

How to Install a Distribution Box—A Comprehensive

Whether you are an electrical contractor or a construction brigade, knowing how to properly and safely install distribution boxes is the basis of

Understanding Distribution Boxes: Your Guide to Power

What are the different types of distribution boxes? The table below provides a comprehensive overview of various distribution box types and

Distribution box

Yet the distribution box is a highly complex component that not only ensures safe power distribution, but is also responsible for protection in an emergency. In this article, you will learn everything you need

What Is an Electrical Distribution Box and Why Is It

An electrical distribution box distributes power safely, prevents overloads, and protects circuits, ensuring efficient and reliable electrical systems.

What Is a Distribution Box?

If you're going to buy a distribution box, there are several things you should look for. You should choose a distribution box that's made of a durable

Ultimate Guide To Distribution Boxes Db Boxes Types

How often should a Distribution Box be maintained? Routine inspection every six months is recommended.

How to Improve the Installation Quality of Distribution Boxes

Learn key methods to enhance distribution box installation quality, including location, height, wiring, and safety compliance.

A Definitive Guide To Distribution Boxes

The distribution box acts as the center of power distribution, distributing electricity to all connected devices. A distribution box, also known as a distribution board, panel board, breaker

The Importance of Distribution Boxes in Electrical Systems

Learn about the importance of distribution boxes in electrical systems and how they help ensure safety and efficiency.

Understanding Septic Tanks: The Role of Distribution Boxes Explained

Explore the role of distribution boxes in septic systems and get practical tips for effective maintenance and management.

The Complete Guide to Distribution Box: Installation, Types & More

How often should distribution boxes be inspected? Distribution boxes should receive visual inspections monthly and comprehensive professional inspections annually.

What Is an Electrical Distribution Box? A Complete Guide

What Is an Electrical Distribution Box? An electrical distribution box serves as a centralized unit for distributing electrical power within

What is an Electrical Distribution Box? A

When it comes to electrical safety, every building — whether it's a cozy home or a sprawling factory — needs a secure system to manage and

The Complete Guide to Septic Tank Distribution Boxes |

The distribution box serves to evenly divide and distribute the effluent exiting the septic tank to the entire drain field. When wastewater enters the box

The installation requirements for the distribution box

Learn how to install a distribution box safely and correctly. Covers wiring, placement, standards, and expert tips for a compliant setup.

What is the Function of a Distribution Box in Electrical Systems

Understand the function of the distribution box in electrical systems and how it ensures safe and efficient power distribution.

A comprehensive understanding of distribution box

When picking a distribution box, check its size and capacity. Make sure it fits your needs now and later. For example, a home box needs fewer

Comprehensive Guide: Do All Septic Systems Need a D

Explore if all septic systems require a distribution box, their benefits, and various system designs in this comprehensive guide.

Septic Tank Distribution: All You Need to Know about

It is recommended that distribution boxes are inspected every three to five years to ensure they are functioning correctly. Can a faulty distribution box be

Understanding Distribution Boxes:A Comprehensive Guide

A distribution boxes is an essential device that manages the safe and efficient flow of electrical power throughout different areas of a building or facility.

How th Choose the Right Distribution Box?

Find out how to choose the right distribution box for your needs! Learn about sizing, safety standards, essential features, and all factors.

Contact Us

For more information, pricing, or custom solutions, please contact us:

Website: <https://sailingpoland.eu>

Email: info@sailingpoland.eu

Phone: +48 537 281 940

Address: ul. Puławska 12, 02-566 Warsaw, Poland

This document is for informational purposes only. Specifications subject to change without notice.

