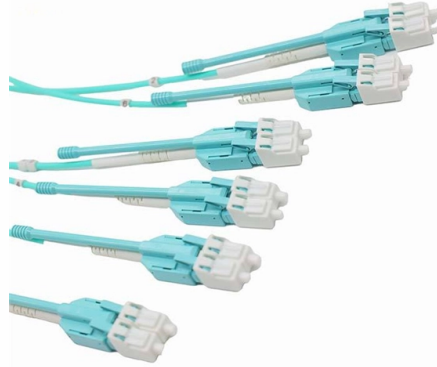


Distribution Box Circuit Division



Overview

A distribution board (also known as panelboard, circuit breaker panel, breaker panel, circuit breaker, electric panel, fuse box or DB box) is a component of an electricity supply system that divides an electrical power feed into subsidiary circuits while providing a protective. A distribution board (also known as panelboard, circuit breaker panel, breaker panel, circuit breaker, electric panel, fuse box or DB box) is a component of an electricity supply system that divides an electrical power feed into subsidiary circuits while providing a protective. A distribution board (also known as panelboard, circuit breaker panel, breaker panel, circuit breaker, electric panel, fuse box or DB box) is a component of an electricity supply system that divides an electrical power feed into subsidiary circuits while providing a protective fuse or circuit. Power distribution boxes, also known as Power Distribution Units (PDUs) or distros, play a vital role in safely distributing electricity from a power source to multiple devices within a circuit. With one input and several outputs, these boxes allow multiple devices to connect through the distro. A distribution box, also known as a power distribution box or electrical distribution box, is used to distribute electrical power safely to multiple circuits. Most of the time, each of these secondary circuits will be. Indication Lights: These provide visual availability and status of mains power supply. Each component plays a specific role. Smart DB boxes have extra parts like energy monitoring units and communication modules. Main Circuit Breaker The main circuit breaker serves as the major electrical system safety device.

Article Content

A Definitive Guide To Distribution Boxes

Box for distributing power When we talk about distribution boxes, we can't forget about Power Distribution Boxes, sometimes known as PDUs or distros. A distro is a device that safely

Explore Power Distribution Box Types and Functions

You can see how many circuits are on the periphery of the box to divide the circuit. 8 circuits and below will basically be used for home use, and

Distribution Boxes vs. Distribution Boards vs. Electrical Enclosures

Distribution boxes handle basic circuit division and protection, distribution boards manage complex power distribution with advanced controls, and electrical enclosures safeguard electrical

Distribution Boxes Types - The Complete Guide

The power distribution boxes deliver electricity from the main electrical main to other circuits. Several distribution boxes are designed for specific use in

The Importance of Distribution Boxes in Electrical Systems

A distribution box is an exposed or concealed metal box that houses the circuit breakers that regulate the distribution of electricity throughout a

Distribution Box vs Control Box vs Junction Box: Key

Learn the differences between distribution boxes, control boxes, and junction boxes. Discover their functions, applications, and how E-abel provides

Understanding Distribution Boxes: A Comprehensive Guide

A distribution boxes is an essential device that manages the safe and efficient flow of electrical power throughout different areas of a building or facility.

12 types of distribution boxes and how to choose them

Distribution boxes, often called breaker boxes or fuse boxes, are basically the central hub where electricity from your main supply gets divided into different circuits.

Understanding Distribution Boxes: A Comprehensive Guide

A distribution box is used to receive electrical power from a main supply and distribute it to multiple branch circuits in a safe and controlled way. It helps protect circuits, organize electrical

Distribution Box and Selection Guide

Dividing incoming electrical power from the main supply into subsidiary circuits is the principal purpose of a distribution box. It contains a

Distribution Boxes: Types and Functions

Also called a distribution board, panel board, breaker panel, or electric panel, it is the central hub in an electrical system that divides incoming

Electric power distribution

Electric power distribution A 50 kVA pole-mounted distribution transformer Electric power distribution is the final stage in the delivery of electricity. Electricity is

Understanding Distribution Boxes: The Heart of Electrical Systems

What Is a Distribution Box? A distribution box is an enclosure that holds important components like circuit breakers, fuses, and bus bars. It primarily functions to accept electricity from

Distribution Box Guide: Types, Components & Solutions

Understand distribution boxes (DB boxes) in 5 minutes. Learn about types, components, functions, and uses. Find the perfect DB box for your needs.

Understanding Distribution Boxes: Your Guide to Power

What are Distribution Boxes and Their Importance? What are Distribution Boxes and Their Importance? Distribution boxes, or electrical junction

Distribution Board vs. Distribution Box: What's the

A distribution box is a compact electrical enclosure designed to help safely manage local power distribution. It doesn't handle large-scale circuit

What is an Electrical Distribution Box? A

At its core, an electrical distribution box (or distribution board) is a metal or plastic enclosure that houses various components responsible for

Panelboards and Distribution Panels: What They Are

Introduction Navigating the world of electrical distribution can be confusing, with terms like panelboard, switchboard, and distribution box often

Distribution Box and Selection Guide

Different settings have distinct electrical requirements: Residential: Homes typically require single-phase power and a Distribution Box with fewer

Comprehensive Understanding of Distribution Box

A distribution box helps manage electricity in homes or workplaces. It makes sure power flows safely and efficiently to devices. Let's look at its main jobs. Power distribution and circuit management The

A Complete Guide to Distribution Boards

Most workplaces rely on an electricity distribution board to divide and route a single source of outside power to multiple smaller circuits around the

12 types of distribution boxes and how to choose them

How to Choose the Right Distribution Box: Your Step-by-Step Guide So, you've seen the options—now what? Choosing the best distribution box isn't rocket science, but it does need a bit of thought. I'll

What Is a Distribution Box?

What to Look for When Choosing a Distribution Box If you're going to buy a distribution box, there are several things you should look for. You should

Distribution Boards

Distribution boards, often referred to as electrical panels or breaker boxes, serve as the nerve center of any electrical system. Here we explore the crucial parts of a distribution board and gain insights into

Distribution Box Guide: Types, Components & Solutions

What is a Distribution Box? A distribution box, or DB box, is a circuit breaker enclosure. It is a vital part and central hub of any electrical system. The

Contact Us

For more information, pricing, or custom solutions, please contact us:

Website: <https://sailingpoland.eu>

Email: info@sailingpoland.eu

Phone: +48 537 281 940

Address: ul. Puławska 12, 02-566 Warsaw, Poland

This document is for informational purposes only. Specifications subject to change without notice.

