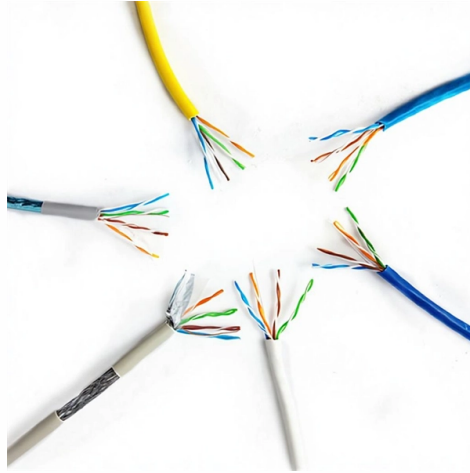


Connecting half of the cable tray with a cut



Overview

Splice plates are the most widely used method for connecting cable tray sections in straight runs. We fix them with nuts and bolts through the holes in the plate and the tray sides. more Developed by Interstates, this cable tray cutting guide acts as a guide. Oglaend System manufacture and deliver Multidiscipline modular bolted support systems, cable trays, cable ladders and accessories for complete installation and containment of Instrument, Electrical, Telecom, HVAC and Piping services. This cutting guideline provides you with the optimal cutting. maintain spacing or to keep cables in place when the tray is ect the minimum bend ra-dius for cables as they exit the bottom of the cable tray. A rung spacing of 6 to 9 inches (150 to 230 mm) is preferable when the cable tray cont d for instrumentation and control applications that require. The bends, tees, crosses, risers and reducers of wire mesh cable tray can be easily and quickly made live at the project by using a bolt cutter. Cutting may be required to: Adjust length.

Article Content

CUTTING GUIDELINE

When cutting Mekano® channels, cuts should be made half way between holes and openings to maintain the closed section torsional strength and reduce sharp edges.

Connecting Wire Mesh Baskets & Cable Trays | CMW

Learn how to connect multiple sections of wire mesh baskets or cable trays efficiently. Tips, tools, and techniques from cable management experts at CMW.

Cable Tray Cutting Guide

Developed by Interstates, this cable tray cutting guide acts as a guide for a metal cutting circular saw for cutting the side rail of a cable tray as well as a guide for drilling the...

First time putting up cable tray.. : r/electricians

First time putting up cable tray.. First and foremost I'm a low voltage guy, so you guys can tear into me and I'll understand. Im putting up cable tray on a job this

How to Calculate Size of Cut to Set Cable Tray

By applying the following formula you can quickly find the size of the cut-out section that you need to cut out of the side of the cable tray, or gutter-type

Master Cable Tray Installation: A Professional Step-by

Learn how to install cable trays for large-scale projects with our professional, step-by-step guide covering industry standards, safety protocols,

Is it legal to cut out portions of cable tray side rail ?

The electricians want to "notch" the cable tray side rail so wireways can be attached to it and transition the cabling into it. They'd remove approximately 12" of the rail at several locations

Complete cable tray manual for electrical engineers and

Complete cable tray manual for electrical engineers and designers (on photo: power cable management ladder tray systems assembled aluminum cable tray ladder

Flexible horizontal adjustable splice plate instructions

Field cut the cable tray/ladder based on the desired angle to be made to fit with the installation. Mark a line on the cable tray/ladder where the cutting will occur.

Any body have tips or tools to help strip tray cable?

This thing is wonderful and inexpensive. I've stripped thousands of tray cables up to 37/c #16 with it and still have the original blade. The only advice I have is to do a

DIY Installation: Mastering Light Duty Cable Tray Setup

Explore our comprehensive DIY guide to master the installation of light-duty cable trays. From planning to cable organization, follow step-by-step instructions for a tidy and efficient cable

Assembly Guide

Guide for making bends, tees, crosses, risers and reducers from straight sections of wire basket cable trays live at the project.

The Practical Skills Series: Cable Tray

Full video content: Introduction, considerations for using tray - 4 mins The Easy Bend - 19 minutes The Reducer/Enlarger - 4 mins The Basic T - 13.5 minutes The Set and Bridge - 5.5 minutes The ...

Mastering Cable Tray Installation | Step-by-Step Guide for a Seamless ...

Learn how to install cable trays correctly. Get the ultimate step-by-step guide on setting up a seamless and reliable cable management system.

How to Cut a Cable Tray

Selecting the right method for cutting a cable tray depends on the material, tray size, and precision needed. Proper technique ensures safety, clean edges, and minimal material waste.

Cable Tray Technical Guide A practical guide to product selection and ...

Cable Tray Technical Guide A practical guide to product selection and installation This guide for engineers and installers has been developed by ABB as a practical reference regarding cable tray

CABLE TRAY SYSTEMS GUIDE

Some applications may require the cable tray to support the weight of a single, dead object in addition to the cable loads. Specifications typically require this to be applied at the midpoint of the span between

How to Calculate Size of Cut to Set Cable Tray

I worked with cable tray about 40 years ago and remember I created a couple of simple formulae to work out how much triangular section of the cable

Trunking Cutting Techniques Guide | PDF

The document provides instructions for forming various bends and joints in electrical trunking and cable trays. It describes: 1) How to mark and cut a right-angle

HOW TO CUT CABLOFIL CABLE TRAY

Angle all cuts away from the new end. Cut each wire with one clean cut - eliminating any grinding or touch-up. Cut the bottom wires first, in order as shown, from the underside of the tray. Rest the lower

CABLE TRAY SYSTEMS GUIDE

Cable Tray Systems Guide HUBBELL Hubbell Wiring Device-Kellems and Hubbell Premise Wiring are divisions of Hubbell Incorporated, a U.S. headquartered manufacturer with over 130 years of

Master the Cable Tray Secret to Perfect Back of Bend ...

How to Master back of bend measurements on electrical Cable Tray. Make a 90 electrical cable tray bend to measurement with a gusset of your choice using one piece of tray.

Connecting Cable Trays: Your Guide to Secure and

Learn common methods for connecting cable trays safely and efficiently. Our guide covers splice plates, quick-connects, and key tips for secure

Cable Tray Installation

Learn everything about cable tray installation with our complete guide. Discover types, steps, and safety tips for efficient electrical cable management.

Cable Tray Technical Guide A practical guide to product selection and ...

In designing supports for a cable tray system, consideration should be given to the loads associated with future cable additions and any additional loading that may be applied to the cable tray system (e.g.,

Mounting instructions

6.2 Pre-drilling unperforated cut cable trays If unperforated cable trays are cut, then appropriate drill holes must be drilled for the straight connections and for the mounting of fittings and joint bars.

How to Install Cable Tray: A Comprehensive Guide to Different Cable ...

Welcome to our step-by-step guide on installing cable trays! In this video, we'll explore the different types of cable trays available and provide detailed instructions for their installation.

Cable tray manual

Nearly every aspect of cable tray design and installation has been explored for the use of the reader. If a topic has not been covered sufficiently to answer a specific question or if additional information is

How to Join Multiple Lengths of Cable Tray Together

The method used for joining multiple lengths of cable tray can be similar but can also be different to the method used for ladder. Whereas cable ladders are joined together using separate splice plates,

Contact Us

For more information, pricing, or custom solutions, please contact us:

Website: <https://sailingpoland.eu>

Email: info@sailingpoland.eu

Phone: +48 537 281 940

Address: ul. Puławska 12, 02-566 Warsaw, Poland

This document is for informational purposes only. Specifications subject to change without notice.

