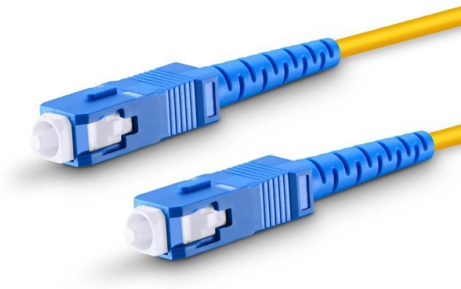


Cold Joint Cold Connector



Overview

Cold Joint is a fault that occurs in soldered connections when the solder does not fully melt or bond properly to the components or circuit board. Our broad portfolio of electrical joints and splices are made for low, medium and high voltage electrical connections. These are engineered to withstand harsh conditions in extreme environments, providing long-term efficiency and reliability even under heavy pollution levels. The incoming optical fiber or indoor optical fiber can be inserted into the mechanical. This guide explains what a cold solder joint is, what it looks like, why it happens, and how to reliably identify, fix, and prevent it. This application note discusses the basic operation of a thermocouple, which includes the definition and function of a reference (cold) junction.



Article Content

Cold Solder Joints: Causes, Detection and Prevention

Learn what causes cold solder joints, how to detect them via visual/X-ray inspection, and proven prevention methods. Includes BGA/CSP solutions and

Cold Shrink Cable Joints and Terminations | TE

Search our portfolio of Cold Shrink Cable Accessories Models & Products and select your specifications. You can now buy select products directly on TE .

Cold Solder Joint – Definitive Guide to Soldering

Absolute Electronics Services presents a definitive guide to cold solder joints. Enhance your soldering knowledge for improved electronic

Cold Solder Joint

Learn what is Cold Solder Joint - Symptoms, Prevent, Repair and Fix Cold Solder Joint. Everything You Should Know about Cold Solder Joints.

Choosing the Right Cold Shrink Joint for Datacenter Medium-Voltage ...

Conclusion Choosing the right cold shrink joint is essential for ensuring safe and uninterrupted medium-voltage power distribution in data centers. Factors such as voltage class,

Cold Joint: Definition & Explanation

Cold Joint is a fault that occurs in soldered connections when the solder does not fully melt or bond properly to the components or circuit board. This results in a weak joint that can lead to poor

Cold Solder Joint Explained: How to Spot and Fix It

Learn how to identify, fix, and prevent cold solder joints. These hidden defects can cause intermittent failure in electronic circuits.

Understanding Concrete Cold Joints: Causes, Prevention, And Repair ...

Learn about concrete cold joints: their causes, prevention strategies, and effective repair techniques to ensure structural integrity and durability.

Fiber optic quick connector cold joint

The fiber optic quick connector/cold connector is a very innovative field-terminated connector, which contains factory-installed optical fiber, pre-polished ceramic ferrule and a mechanical splicing

Cold Solder Joints: How to Identify, Fix, and Prevent the #1 Hidden ...

Discover what cold solder joints are, how to detect them, and proven methods to fix and prevent failures. This complete guide

What is a Cold Joint in Concrete? (And How to Fix them!)

A cold joint in concrete is an area or surface with a structural discontinuity caused by the delayed concrete pouring between two layers of concrete. The delayed

What Is a Cold Solder Joint? A Guide to Better

A cold solder joint weakens electrical connections. Learn how to spot, fix, and prevent this common soldering issue.

Electrical Joints | TE Connectivity

Our broad portfolio of electrical joints and splices are made for low, medium and high voltage electrical connections. These are engineered to withstand harsh

Cold Shrink Cable Joints | 3M Cold Shrink Low Voltage

Stranded copper conductors can be effectively terminated using either Cembre crimp connectors and associated crimping tools or shearbolt cable connectors. Low

WOER Cold Shrink Cable Jointing Kit

WOER offers premium cold shrink jointing kits including LV 1-5 core, MV 1-core & 3-core options, plus cast resin straight-through and branch joints. Get your reliable cable solutions today!

Cold Solder Joint Guide: How to Identify, Fix, and Prevent

Learn what a cold solder joint is, what it looks like, and its causes. Expert engineering guide on how to fix and prevent these defects in PCB assembly.

What is Cold Joint? How is it created and prevented?

Cold joint is the adhesion-adhesion deficiency that visibly occurs at the joining surfaces of these castings into different parts.

What Is a Cold Solder Joint?

What are Cold Solder Joints? A cold solder joint is a type of electrical connection where the soldered joint has not been properly heated and didn't melt

Cold solder joints

Imagine a world without technology, where wires hang loose and components fail to connect. The culprit? Cold solder joints—a notorious

Quick Connect & Disconnect Fittings | Coupling

CPC is the leading innovator of quick connect and disconnect fluid couplings, fittings and connectors rated for bio, medical and industrial applications.

Cold Solder Joint: A Dry or Cracked Solder Joint

What is a Cold Solder Joint? A cold solder joint is a defective solder connection that occurs when the solder fails to melt and flow properly during the

Cold Junction Compensation in Thermocouple Guide

Thermocouples are one of the most widely used temperature-measurement devices because of their ruggedness, repeatability, and fast response time. This application note discusses

Cold Solder Joints: Causes, Detection & Prevention Guide

A cold solder joint occurs when solder doesn't properly melt or bond, creating a weak electrical/mechanical connection — learn how to identify, fix and

Advanced Cold Shrink Joints for Power & Renewable

Cold shrink cable joints are a testament to how innovation can transform traditional electrical practices. Their ease of installation, reliability, and

The Ultimate Guide to Preventing Cold Solder Joints:

Learn how to prevent cold solder joints with our ultimate guide. Master temperature, techniques, and tools for reliable PCB connections.

3M Cold Shrink Cable Joints (MV-HV 11kV 33kV 66kV)

Thorne & Derrick distribute 3M Cold Shrink Cable Joints suitable for jointing, connecting and splicing medium and high voltage (MV-HV) cables including 11kV,

Cold Solder Joints: Causes, Detection, and Effective Fixes

Learn about cold solder joints and their causes, how to detect them, and proven methods to fix them. Follow these tips for durable soldering.

Inline Joint: Cold Shrink, Straight up to 42 kV

Our Raychem CSJA Cold Shrinkable Single Core Straight Joints are designed to cover a wide range of applications and accommodate various cable and

Contact Us

For more information, pricing, or custom solutions, please contact us:

Website: <https://sailingpoland.eu>

Email: info@sailingpoland.eu

Phone: +48 537 281 940

Address: ul. Puławska 12, 02-566 Warsaw, Poland

This document is for informational purposes only. Specifications subject to change without notice.

