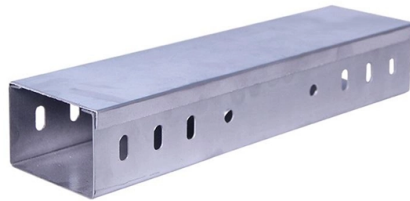


Can an optical modem be connected to a switch



Overview

Sure, you can connect a switch to the modem's Ethernet to provide Internet access to your devices, just like computers. It provides an exclusive electrical signal path for any two network nodes connected to the switch. Other common switches are telephone voice switches, fiber optic. With a fiber ONT can I go straight into a switch?

I have multi gig internet coming into my house via a fiber ONT. I am thinking of getting the deco x75 pro mesh routers that offers (1)- 2. 5gbps port and (2) gigabit ports. I know typically in the past you would need to go: Internet station (coax) >. A switch (multi-port bridge, data storage and forwarding) is a network device used for electrical/optical signal forwarding. It converts the digital signal to analog signal through modulation at the sending end, and converts the analog signal to digital signal for. An ONT (Optical Network Terminal) is used in fiber internet to convert light signals into data, while a modem is used in cable or DSL connections to modulate and demodulate signals. ONTs are for fiber; modems are for traditional broadband.



Article Content

With a fiber ONT can I go straight into a switch?

It is possible to do this if your switch is managed and you know how to work VLANs and your router support VLANs. The term for this config is "router on a stick". It is not a good idea in general though.

Modem, Router, Switch and Access Point: What They

Learn what a modem, router, switch and access point do, how they work, and the roles they play in a network in simple yet detailed terms.

Fiber Box vs. Modem: Clarifying the Distinction

It modulates and demodulates digital data between a customer's computer or router and the internet service provider's network. In the context of fiber optic internet, a modem is usually not

How to connect a new optic fibre to an ethernet switch

If you want to use fibre then buy a switch with 2 SFP ports for the house and switches with at least one sfp port for the remote buildings. At these distances, it doesn't really matter what

Common Applications of SFP+ Interface

Most often, you will see these SFP+ electrical port modules used with networking switches as they can convert the SFP+ Port of a switch into a high

Can I plug internet cable from modem into a managed switch ...

I have spectrum internet and all the modem they have only has one outlet for internet and my router is in the living room and I don't want to move it should I plug the modem wire into a switch and plug one of

Is a router necessary between a modem and a switch?

A switch will not provide routing capability and should not be connected directly to the modem or ONT unless a DHCP Server is present

ONT vs. Modem vs. Router: What Are the Differences?

It takes the light signals traveling through fiber optic cables and converts them into electrical ones that your network can understand. From there, it passes the

What is a Fiber Optic Modem?

What is an ONT (Optical Network Terminal)? An ONT (Optical Network Terminal), also known as an ONU (Optical Network Unit), is the device that

A Quick Guide to ONT (Optical Network Terminal)

The ONT - Optical Network Terminal (also known as the modem) is connected to the Termination Point (TP) via an optical fiber cable. Using an

Modem vs Router vs Switch: Key Differences

Sure, you can connect a switch to the modem's Ethernet to provide Internet access to your devices, just like computers. The number of computers

After the Optical Modem, Should You Connect a Switch

Lots of people wonder about this. If you want to know how to connect, then keep watching, this video will answer your questions.

How to know if Your Router And Modem Are Compatible

Fiber Optic routers have fiber optic ports on them. But, DSL routers have an Ethernet WAN port on them. You have to connect this port with a modem

Modem, Router, Switch, and Access Point: What's the

Don't know the difference between a modem and a router? Unsure what an access point does compared to a switch? Here's a quick rundown of the

What is the difference between an ONU, a router, and a switch?

The optical network unit integrated in the ONU can receive optical signals from the optical transmission line, and then convert these optical signals into electronic signals that can be recognized by the

Openreach modem (ONT) explained: Ports and models

Openreach modem (ONT) explained: Ports and models available If you are a fibre customer, it's likely you'll have an Openreach modem (or ONT) installed. This

home networking

Can I switch my modem over to any other coaxial entry point in the house? Or does each jack have to be set up by an engineer sent over by my ISP. I'm a bit afraid to just try it, in case connecting to an

What is an Optical Terminal Network and Why Do I

Learn how an Optical Network Terminal — also known as an ONT — plays a vital role in providing fiber optic service to your home.

Routers vs. Modems vs. Switches

Modems vs Switches Modems and switches share the least common ground of the three pieces of networking equipment. Rarely do these products

Exploring the Possibility: Can You Connect a Switch Directly to Your ...

No, you cannot connect a switch directly to your cable modem. A switch is designed to distribute network connections within a local area network (LAN), whereas a cable modem is

How to resolve Ethernet wiring issues due to different modem

The issue I am facing now is how to switch from the old modem-router in the utility room to the new Linksys router in the dining room, the problem being that all the Ethernet / network wiring

What is optical modem, switch and router? How to

Optical modems are generally used to access optical fibers at home; switches and routers work in a local area network, but switches work at the data

Does Fiber Internet Need a Modem?

As fiber internet becomes more widely available, many users wonder: Does fiber internet need a modem? If you're switching from cable or DSL. You

Connecting a switch to a cable modem

Cable modem -> 8-port unmanaged switch -> 6 ethernet connections to ports within the house. One of these ports goes into a wireless router (Main floor) while the modem and switch are on a lower floor. I

Modem, Router, Switch, and Access Point: What's the

You just plug your extra devices into the switch, then plug the switch into the router, and they'll appear on your network. Note that you need a router in

ONT vs Modem: What's the Difference?

If you're getting fiber optic internet, you've probably heard about an ONT vs modem - but what's the difference, and do you really need both? It can

Fiber vs. Cable Internet 101: The Best Tips | Dong Knows Tech

Fiber vs. Cable Internet: Pictured here are a Cable Modem (top) and a Fiber-optic ONT in action. The Cable modem (top)

Modem vs Router vs Switch: Key Differences

Learn the differences between a modem, router, and switch, how each works, and which one you need for your home or office network.

ITPro Today, Network Computing, IoT World Today combine

ITPro Today, Network Computing and IoT World Today have combined with TechTarget . The page you are looking for may no longer exist.

Contact Us

For more information, pricing, or custom solutions, please contact us:

Website: <https://sailingpoland.eu>

Email: info@sailingpoland.eu

Phone: +48 537 281 940

Address: ul. Puławska 12, 02-566 Warsaw, Poland

This document is for informational purposes only. Specifications subject to change without notice.

