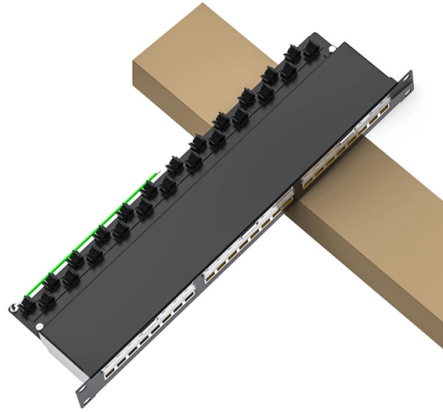


Are gigabit fiber ports on switches useful



Overview

These ports accept modular transceiver plugs, which permit fiber and copper Ethernet switches to interface with more diverse networks. ubiquiti has single mode sfp modules can do 1gbps at 3km or 10gbps at 10km. Thank you for letting me know this! The slot just provides the power. Everything else is included in. An SFP port on a Gigabit switch is a modular interface that accepts Small Form-Factor Pluggable (SFP) transceiver modules. Unlike fixed RJ45 copper ports, SFP ports support both fiber and copper modules, enabling far longer distances, greater flexibility, and improved scalability in enterprise. Both are capable of 1Gbps speeds and both are Layer 2 only switches. This port can support different types of transceivers and allows connections over various media, such as. These interchangeable modules support various media types, including copper or fiber-optic cables, providing flexible networking options based on specific requirements. We will look at data rates, functions, and network architecture.

Article Content

Why use 1Gbps fiber port over a 1Gbps Ethernet port?

I install an SFP 1 Gigabit interface transceiver on both switches. Since the switch is already 1 Gbps capable, what benefits do I gain by connecting both switches together via SFP using

What You Need to Know About the SFP Port on a

This port can support different types of transceivers and allows connections over various media, such as copper cables and fiber optic cables,

Understanding SFP Switches: The Essential Guide to Fiber and

These ports accept modular transceiver plugs, which permit fiber and copper Ethernet switches to interface with more diverse networks. Such integration enables Ethernet switches to

A Straightforward Guide to the SFP Port on a Gigabit Switch

In plain terms, an SFP port on a gigabit switch is the little plug-in hole that gives the switch physical flexibility — the ability to use fiber one minute and copper the next without buying a different switch.

Gigabit Switches

What are the Features of Typical Fast Gigabit Switch? A Gigabit switch helps boost network speed and usually supports speeds of 10/100/1000 Mbps for copper

Explore SFP Ports in Gigabit Switches: Features and

As a result, interfaces on SFP ports on Gigabit switches they provide a powerful and reliable tool for connecting to many types of network cables that

What Is an SFP Port on a Gigabit Switch?

A switch SFP port converts electrical signals into optical signals via SFP transceivers, or maintains them electrically for copper connections. By using an SFP to RJ45 adapter (e.g.,

Explore the Significance of SFP Ports on Gigabit Switches

Boost data transmission with SFP ports on gigabit switches! Learn how these compliant switches with IEEE 802.3z standard provide up to 1Gbps

Everything You Need to Know About a 10-Port Gigabit

A ten-port switch that supports Gigabit Ethernet is necessary to form a reliable and high-speed network in a home office, small business, or larger

An introduction to SFP ports on a Gigabit switch | TechTarget

SFP ports enable Gigabit switches to connect to a variety of fiber and Ethernet cables and extend switching functionality throughout the network. Small form-factor pluggable is a hot

What is a Gigabit Ethernet Switch? Benefits,

EtherWAN's full gigabit Ethernet switches provide high port density, and are an economical solution for applications with high bandwidth demands.

Gigabit Ethernet Switch Guide: How It Works, Types

4. Do Gigabit Switches Reduce Latency? Yes, compared to hubs or Fast Ethernet switches, Gigabit switches reduce latency due to dedicated

Gigabit Switch Fibre Transceiver CommercialGrade Ring Network Switch

DC 5 V Use FTTB/FTTX Network Gigabit Ethernet Model Number XH-FSYG2D3HW-320C Brand Name OEM Place of Origin China Warranty Time 1 YEAR Port 2 optical,3 electrical Power - Minimum

What's the Real Value of SFP Ports? How Do They Transform Gigabit ...

When you're evaluating a new Gigabit switch for your network, the array of ports on the front panel can be confusing. While the familiar RJ45 Ethernet ports are easy to understand, the smaller, more

What is a gigabit switch?

If the switch is connected directly to the destination device, the device accepts the data packet, responds, and the transmission is complete. If the device is

What You Need to Know About the SFP Port on a

Best Practices for Maintaining SFP Ports and Modules To preserve the service life and optimize the functionality of SFP modules in a Gigabit switch,

What Is an SFP Port on a Gigabit Switch? Full Guide 2026

SFP ports on Gigabit switches provide a powerful combination of flexibility, scalability, and long-distance connectivity. They allow network

10 Gigabit SFP Switches | 10 Gig SFP Switch | 10Gbs

10 Gigabit SFP Switches 10 Gigabit SFP switches proudly manufactured in the USA by Versitron are available in 28, 36, and 52 port sizes with managed configuration

Understanding 10G SFP Ports on Cisco Switches: A

Discover the power of 10G SFP ports on Cisco switches. This guide explains 10 gigabits per second capabilities, uses, and benefits for network

What Is an SFP Port on a Gigabit Switch? Full Guide 2026

Learn what an SFP port is on a Gigabit switch, the types of SFP ports, SFP vs RJ45 differences, long-distance fiber options and real-world use

A Comprehensive Overview of Ethernet Switch Port Types

The SFP port is commonly found on Gigabit Ethernet switches and is primarily used for fiber optic device connections or for uplinking 1G switches to

Understanding SFP Port: A Guide to Gigabit Ethernet

A: You can use an SFP module in a gigabit switch. SFP modules are commonly used in gigabit switches to provide high-speed connectivity and

What's the point of SFP connectors? : r/Ubiquiti

In my case, I ended up using the SFP on my 24 port switch to connect to another building and keep them electrically isolated in the event of a lightning strike in our yard.

Gigabit Switch: What It Is, How It Works & Which to

The SFP port switch is a type of Gigabit Ethernet switch that supports more types of communication cables and longer transmission distances than

Understanding SFP Switches: The Essential Guide to Fiber and

Installation Tips for a 24-Port Fiber Switch Step-by-Step Guide to Setting Up SFP Slots
Common Mistakes to Avoid When Deploying Network Switches Troubleshooting
Connection Issues

A Guide to SFP Ports on Gigabit Switches

An SFP port is a compact, hot-swappable interface on a network device, such as a Gigabit switch, router, or server. The primary function of an

Choosing the Right Fiber Switch for Your Server Infrastructure

Explore the differences between single-mode and multimode fiber optics, understanding applications in data centers, and the importance of choosing the right cables for future-proofing your

Gigabit SFP Network Switch Selection Guide for 2025

A Gigabit SFP switch is a network switch that primarily operates at 1 Gigabit per second and is equipped with Small Form-Factor Pluggable (SFP) ports, which are hot-swappable interface

Gigabit Switch SFP Port: Functions and Practical

SFP ports empower gigabit switches to interconnect via diverse fiber and Ethernet cables, extending network-wide switching capabilities. As the

Unleash Your Network's Potential: The Ultimate Guide

What is a Gigabit Switch and How Does it Work? A gigabit switch is a networking hardware that allows for data transmission among devices within a

Contact Us

For more information, pricing, or custom solutions, please contact us:

Website: <https://sailingpoland.eu>

Email: info@sailingpoland.eu

Phone: +48 537 281 940

Address: ul. Puławska 12, 02-566 Warsaw, Poland

This document is for informational purposes only. Specifications subject to change without notice.

