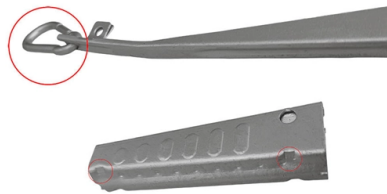


All protection for primary distribution boxes



Overview

Incorporates a complete protection system (e., three-tier safety protection) and may include copper busbars for optimal conductivity. Used in construction or other project sites, supplying power to specific zones such. The truth is, picking the right protection level for distribution boxes isn't just about compliance paperwork—it's about real-world reliability when it matters most. When they fail, everything goes dark. Today, we'll. Abstract: To protect personnel, equipment, and maintain continuity of service for an electrical system, protection or fault interrupting devices are required. Adequate system designs allow for the system to withstand and isolate faults while not causing additional damage and/or outages. System. Primary distribution systems consist of feeders that deliver power from distribution substations to distribution transformers.

Article Content

Single Phase Distribution Box Definition and Main Parts

A single phase distribution box controls and protects home or office circuits. Learn its definition, main parts, and how it ensures electrical safety.

Distribution Boxes Explained: Types, Functions, and

Learn about distribution boxes, their types, functions, and safety features to ensure efficient and secure electrical power distribution in any building.

Power Distribution Boxes Explained Simply

Discover the essentials of a Power Distribution Box—how it works, key types, benefits, and tips to ensure safe, efficient electrical power management.

Requirements And Specifications For Installation Of

The installation requirements and specifications of Distribution box involve many aspects, including site selection, fixing method, wiring specifications

Distribution Boards

Distribution boards, often referred to as electrical panels or breaker boxes, serve as the nerve center of any electrical system. Here we explore the crucial parts of a distribution board and gain insights into

Distribution Boxes Types - The Complete Guide

The power distribution boxes deliver electricity from the main electrical main to other circuits. Several distribution boxes are designed for specific use in

The Meaning and Function of Primary, Secondary, and Tertiary ...

Part of a three-tier protection system, ensuring power safety at intermediary stages. Equipped with double doors for added protection, coated surfaces for durability, and a rainproof design for outdoor

Understanding Distribution Boxes: Your Guide to Power

Weatherproof Distribution Boxes These serve specific outdoor purposes, with rain, dust, and extreme temperatures sealed shut, protecting any

A Definitive Guide To Distribution Boxes

The distribution box acts as the center of power distribution, distributing electricity to all connected devices. A distribution box, also known as a distribution board, panel board, breaker

System Protection

The major concern for system protection is protection against the effects of destructive, abnormally high currents. These abnormal currents, if left unchecked, could cause fires or explosions resulting in risk

Distribution Board vs. Distribution Box: What's the

Whether it's for mobility or environmental protection, distribution boxes play an essential role in keeping power accessible and secure wherever

The Ultimate Guide to Distribution Box Types

Discover the key types of distribution boxes with NUOMAK's comprehensive guide. Learn about Main Distribution Boards (MDB), Consumer Units, Transfer

Distribution Box Guide: Types, Components & Solutions

Modern electrical distribution boxes are designed to comply with national and international safety standards, ensuring protection for both property

Primary and secondary power distribution systems (layouts explained)

In addition to installing leakage protectors in the final switch box, a first level leakage protector should also be installed in the upper level distribution box or main distribution box, forming

Understanding Distribution Boxes:A Comprehensive Guide

A distribution boxes is an essential device that manages the safe and efficient flow of electrical power throughout different areas of a building or facility.

The Meaning and Function of Primary, Secondary, and Tertiary ...

Primary Distribution Box: Designed for construction or large-scale projects as a main distribution point. Built to meet specific safety and operational standards for temporary construction sites. Incorporates

The Complete Guide to Distribution Box: Installation, Types & More

Enhanced safety features in premium distribution boxes include improved arc fault protection, better insulation systems, and more reliable protective devices. These features reduce

What Is a Distribution Box?

If you're going to buy a distribution box, there are several things you should look for. You should choose a distribution box that's made of a durable

The Meaning and Function of Primary, Secondary, and Tertiary ...

Differences Between Primary, Secondary, and Tertiary Distribution Boxes Primary Distribution Box: Designed specifically for construction sites, conforming to relevant electrical codes.

Understanding Distribution Boxes: A Comprehensive Guide

Learn what a distribution box is, its types, and how to choose the right one for your project. Includes clear examples and expert tips.

What is an Electrical Distribution Box? A

When it comes to electrical safety, every building — whether it's a cozy home or a sprawling factory — needs a secure system to manage and

Analysis of the protection level test standard for distribution boxes

Distribution boxes protect our electrical systems like bodyguards shield VIPs. When they fail, everything goes dark. Today, we'll explore how international standards translate into practical

What Is an Electrical Distribution Box? A Complete Guide

Their role in protecting circuits from overloads and faults underscores their importance in maintaining system integrity. Fundamentally,

What is a Distribution Box? - A Comprehensive Guide

Distribution boxes also enhance safety by protecting electrical connections from damage and reducing the risk of electrical shocks. Available in

Complete Guide For Distribution Boxes Types

Distribution boxes, also known as electrical distribution boards or panels, are pivotal components in electrical systems, ensuring the safe and organized distribution of

Contact Us

For more information, pricing, or custom solutions, please contact us:

Website: <https://sailingpoland.eu>

Email: info@sailingpoland.eu

Phone: +48 537 281 940

Address: ul. Puławska 12, 02-566 Warsaw, Poland

This document is for informational purposes only. Specifications subject to change without notice.

