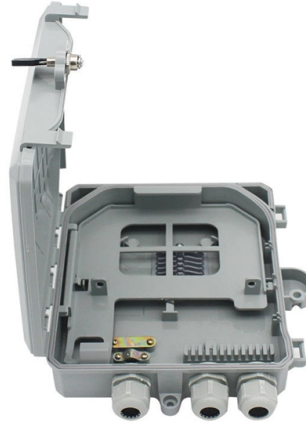


## **Advantages of Japanese Security Industrial Switches**



### **Overview**

Fan-less, high reliability, long life, long durability. Explosion -proof, dust-proof, water-proof, corrosive-resistant. Extended operating temperature range from -40 °C to +85 °C. Industrial environments are prone to harsh conditions, including extreme temperatures, electromagnetic interference, and physical wear and tear. Industrial switches are built with robustness and redundancy mechanisms, such as Rapid Spanning Tree Protocol (RSTP), Ethernet Ring Protection Switching. This article delves into the rise of Japanese manufacturing in this sector, exploring the advantages and disadvantages, supplier negotiation techniques, market conditions, and best practices that have shaped its success. They are usually housed in rugged enclosures with hardened components to ensure reliable and uninterrupted operation. In English, the Japanese word 'monozukuri' can be translated as 'making things'. But monozukuri means so much more than its humble English. Automation, data exchange, and the Internet of Things (IoT) have transformed production processes, enhancing efficiency and reducing errors. These. Advantages of Bypass industrial switches in the field of smart transportation: High performance and low latency: The Bypass industrial switch has the characteristics of high-speed data processing capability and low latency, which can meet the requirements of the intelligent transportation system.

## Article Content

Industrial Switches for Military, Government, and

Whether you're enhancing video surveillance, supporting industrial automation, or securing government networks, understanding how industrial

Unlocking Japan's Hidden Gems: The Rise of Switch OEMs in Modern ...

Introduction to Switch OEMs in Japan In the dynamic landscape of modern manufacturing, Original Equipment Manufacturers (OEMs) play a pivotal role in driving innovation

Industrial switch and its advantages

These ruggedized network switches play a key role in providing reliable and secure communications in a variety of industrial environments. Let's take a look at the

Benefits of Non-Contact Safety Switches in Industrial Automation

Discover how non-contact safety switches improve industrial automation by reducing wear, enhancing safety, preventing tampering, and supporting hygienic environments.

Japan Industrial Explosion-Proof Safety Switches Market

The Japan industrial explosion-proof safety switches market is distinctly segmented by critical applications that demand rigorous safety

How to Select and Use Industrial Ethernet Switches

Industrial Ethernet switches play a vital role in modern industrial automation and control systems. Compared with traditional commercial Ethernet

Industrial Switch: Advantages and Different Types

Industrial Ethernet switches provide critical services for secure networks in harsh environments. This article explains their key advantages and

Revolutionizing Connectivity: The Rise of Japanese Manufacturing in ...

This article delves into the rise of Japanese manufacturing in this sector, exploring the advantages and disadvantages, supplier negotiation techniques, market conditions, and best

Understanding the Role of an Industrial Network Switch

Explore the essential role of industrial network switches in modern infrastructure. Discover unmanaged and managed Ethernet switch solutions,

Japan\_JanReport

Since the beginning, we have adopted three guiding principles: improving quality, ensuring safety and reliability, and creating functional switches.” In recent decades, Japanese companies have...

## Guide to implementing Industrial Grade Switches

Industrial switches are used in industrial applications such as automotive, industrial automation, process control, and transportation. These

## Industrial Switches in Industrial Automation

This article explains all you need to know about industrial automation, including requirements, roles, and cases of industrial switches for industrial automation networks.

## Japan Industrial Interlock Switches Market Size 2026

Japan Industrial Interlock Switches Market Size And Forecast 2026-2033 Japan Industrial Interlock Switches Market size was valued at USD 0.2 Billion in 2022 and is projected to reach USD 0.

## Industrial Switch / What are the advantages of Industrial

The Industrial POE Switch is the ideal solution for powering remote devices such as IP phones, video cameras, wireless access points, alarms, traffic

## What is an industrial switch? And what are the differences between it ...

July 18, 2025 What is an industrial switch? And what are the differences between it and an ordinary switch? In modern factories, robotic arms precisely grasp components, AGV trolleys shuttle along

## Understanding the Importance of Safety Switches in

Industrial safety is a paramount concern in environments where machinery, processes, and personnel coexist. In this intricate dance of productivity, the role

## Revolutionizing Connectivity: The Rise of Japanese Manufacturing in ...

By consistently seeking ways to enhance processes, products, and customer experiences, Japanese manufacturers will maintain their leadership in the network device market. Conclusion

## How do industrial switches contribute to network security?

Industrial switches offer sophisticated access control mechanisms to restrict unauthorized access to network resources. Features such as 802.1X authentication, port security, and MAC address filtering

## Revolutionizing Japanese Manufacturing: The Role of ...

**Advantages of Using Photoelectric Sensors and Switches in Manufacturing Precision and Accuracy** The primary advantage of photoelectric sensors is their precision and accuracy. These

**NKK Switches: Japan 1s switch specialist**

Since the beginning, we have adopted three guiding principles: improving quality, ensuring safety and reliability, and creating functional switches." In recent decades, Japanese

**Industrial Switches for Modern Manufacturing and**

Discover how industrial switches support modern manufacturing and automation with durability, flexibility, quality of service, and robust cybersecurity.

**What are the 5 common advantages of industrial switches?**

Industrial switches generally use aluminum alloy shells, which have better heat dissipation and stronger protection. They can basically work normally in the temperature range of -45°C to +85°C, and can

**Unveiling the Innovations in Japanese Manufacturing: The Rise of the ...**

The rise of the switching regulator industry in Japan is a testament to the country's enduring commitment to manufacturing excellence and technological innovation. For procurement

**The Application and Advantages of Bypass Industrial Switch in**

To sum up, the Bypass industrial switch has important applications and advantages in the intelligent transportation system. It can provide network communication services with high reliability, security

**Collaborative protection of industrial switches and industrial network ...**

In the era of Industrial Internet, as the core equipment of industrial network, industrial switches not only bear the heavy responsibility of data transmission, but also must ensure the security of the network in

**Unlocking Japan's Hidden Gems: The Rise of Switch OEMs in Modern ...**

Japanese OEMs have been at the forefront of integrating smart manufacturing techniques, enabling real-time monitoring and predictive maintenance. These technological

**SMART NETWORK SOLUTION**

Providing Gigabit-Speed cabling & Wi-Fi network systems and industrial Ethernet Switches for corporate/commercial buildings, data centers, hospitals, universities,

## Contact Us

For more information, pricing, or custom solutions, please contact us:

Website: <https://sailingpoland.eu>

Email: [info@sailingpoland.eu](mailto:info@sailingpoland.eu)

Phone: +48 537 281 940

Address: ul. Puławska 12, 02-566 Warsaw, Poland

This document is for informational purposes only. Specifications subject to change without notice.

